

# CALAMA - CHILE

## RNP Z Rwy 28 (AR)

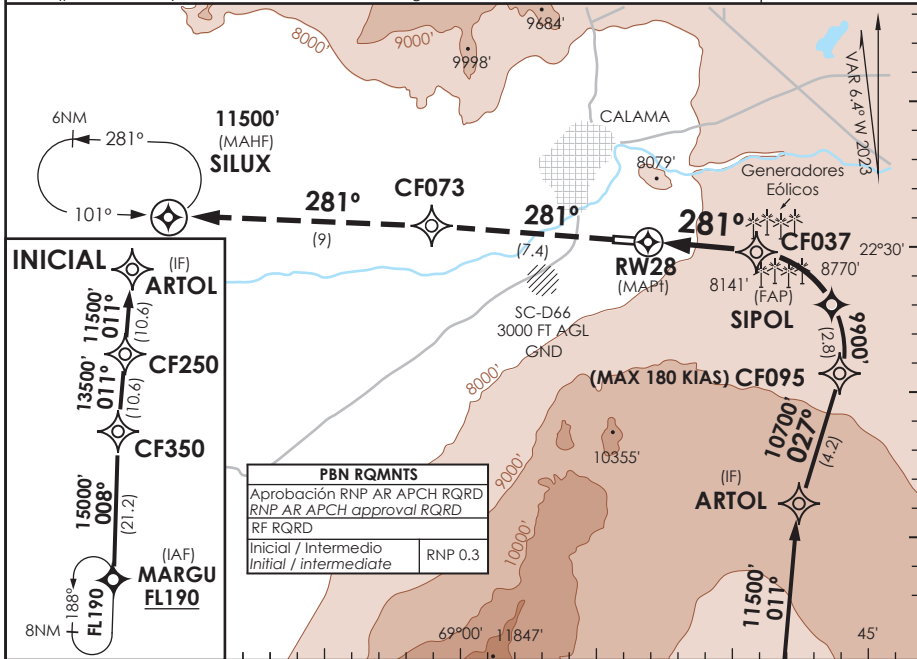
APP ANTOFAGASTA RADAR APP Antofagasta Radar	134.1/120.9	TORRE CALAMA Calama Tower	118.7	CONTROL TERRESTRE Ground Control	121.8
--	-------------	------------------------------	-------	-------------------------------------	-------

RNP	FINAL APCH CRS <b>281°</b>	MNM ALT SIPOL <b>9900'</b>	DA/H ver mínimos DA/H refer to minimums	AD Elev THR 28 Elev <b>7631'</b>	<div style="border: 1px solid black; border-radius: 50%; width: 60px; height: 60px; margin: 0 auto; display: flex; align-items: center; justify-content: center;"> <span>16100 FT</span> </div>
-----	-------------------------------	-------------------------------	--	--	---

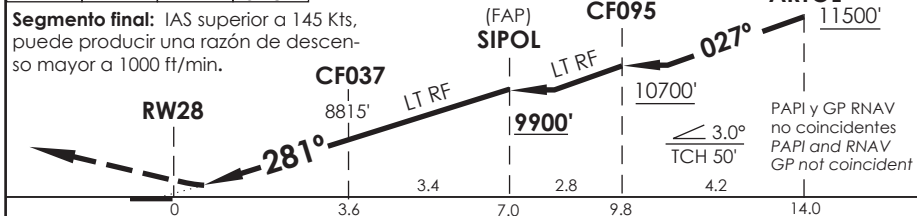
APCH FRUSTRADA: Ascenso en TR281° hacia CF073, continúe ascenso en TR281° directo a SILUX 11500', ingrese (posible ascenso) en HLDG 101° izquierda o según autorización ATC.

Missed Apch: Climb on TR281° to CF073, continue climbing on TR281° direct to SILUX 11500', enter (possible climb) on HLDG 101° left or according to ATC clearance.

MSA 25 NM RW28



TR281°	CF073	TR 281°	11500'	Nivel de Transición por ATC Transition Level by ATC	ALT MNM 11500'
--------	-------	---------	--------	--	----------------



A B C D	DIRECTO RWY 28 <i>Straight in RWY 28</i>						<b>RNP AR RWY 28 SCCF:</b> CAT A/B/C PROC NA BLW -5°C ó ABV 43°C. CAT D PROC NA BLW -5°C ó ABV 32°C
	RNP 0.1 DA <b>8020'</b> (389')		RNP 0.15 DA <b>8080'</b> (449')		RNP 0.30 DA <b>8190'</b> (559')		
	ALS-F-1	WO ALS-F-1	ALS-F-1	WO ALS-F-1	ALS-F-1	WO ALS-F-1	
A	0.8Km	1.6Km	0.8Km	1.6Km	0.8Km	1.6Km	<b>MNM ALTN RNP 0.3:</b> <b>VER PAG GEN 2.19</b> See pag 2.19
B	0.8Km	1.6Km	0.8Km	1.6Km	0.8Km	1.6Km	
C	1.2 Km	2.0Km	1.6Km	2.4Km	2.0Km	2.8Km	
D	1.2 Km	2.0Km	1.6Km	2.4Km	2.0Km	2.8Km	
Veloc. Terrestre Kts		80	100	120	140	160	<b>RQR AUTORIZACIÓN ESPECIAL PARA ACFT Y CREW</b> SPECIAL ACFT AND AIRCREW AUTHORIZATION RQRD
Angulo DES 3° FPM		425'	531'	637'	743'	849'	
MAPt en DA							

DASA / SECCION AIS-WAP