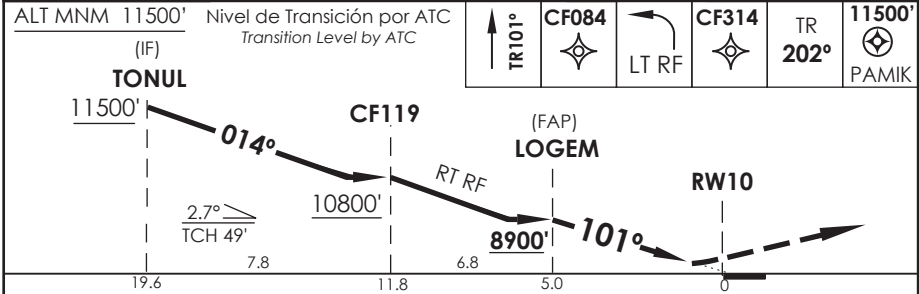
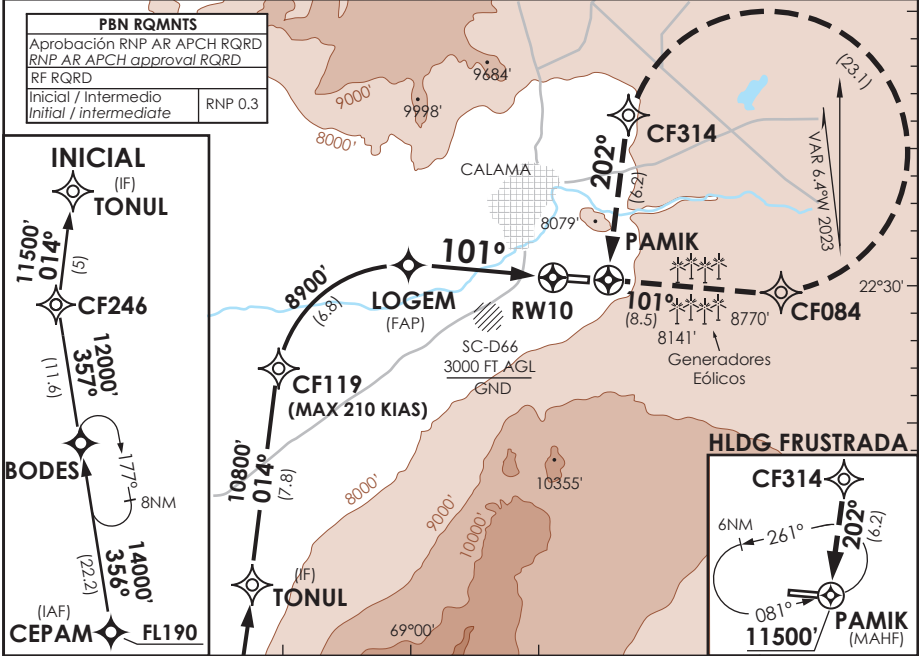


AD. EL LOA CALAMA - CHILE

SCCF IAC 6
RNP Z Rwy 10 (AR)

APP ANTOFAGASTA RADAR APP Antofagasta Radar	134.1/120.9	TORRE CALAMA Calama Tower	118.7	CONTROL TERRESTRE Ground Control	121.8
RNP	FINAL APCH CRS 101°	MNM ALT LOGEM 8900'	DA/H ver mínimos DA/H refer to minimums	AD Elev THR 10 Elev	7631' 7431'
APCH FRUSTRADA: Ascenso en TR101° hacia CF084, continue ascenso via LT RF hasta CF314, luego en TR202° directo a PAMIK 11500', ingrese HLDG 081° izquierda o según autorización ATC. Missed Apch: Climb on TR101° to CF084, continue climbing via LT RF until CF314, then on TR202° direct to PAMIK 11500', enter on HLDG 081° left or according to ATC clearance.					16100 FT MSA 25 NM RW10



CATEGORIA	DIRECTO RWY 10	Straight in RWY 10				RNP AR RWY 10 SCCF: CAT A/B/C PROC NA BLW -5°C ó ABV 40°C. CAT D PROC NA BLW -5°C ó ABV 30°C
	RNP 0.15 *	DA 7880' (449')	RNP 0.30	DA 8000' (569')		
A	1.6 Km				* RNP 0.15: MNM Razón ASC MA: 230 Ft/NM TIL 9500'	
B	1.6 Km					
C	2.4 Km	2.8 Km				
D	2.4 Km	2.8 Km				
Veloc. Terrestre Kts	80	100	120	140	160	RQR AUTORIZACIÓN ESPECIAL PARA ACFT Y CREW SPECIAL ACFT AND AIRCREW AUTHORIZATION RQRD
Angulo DES 2.7° FPM	382'	478'	573'	669'	764'	
MAPt en DA						

DASA / SECCION AS-MAP