
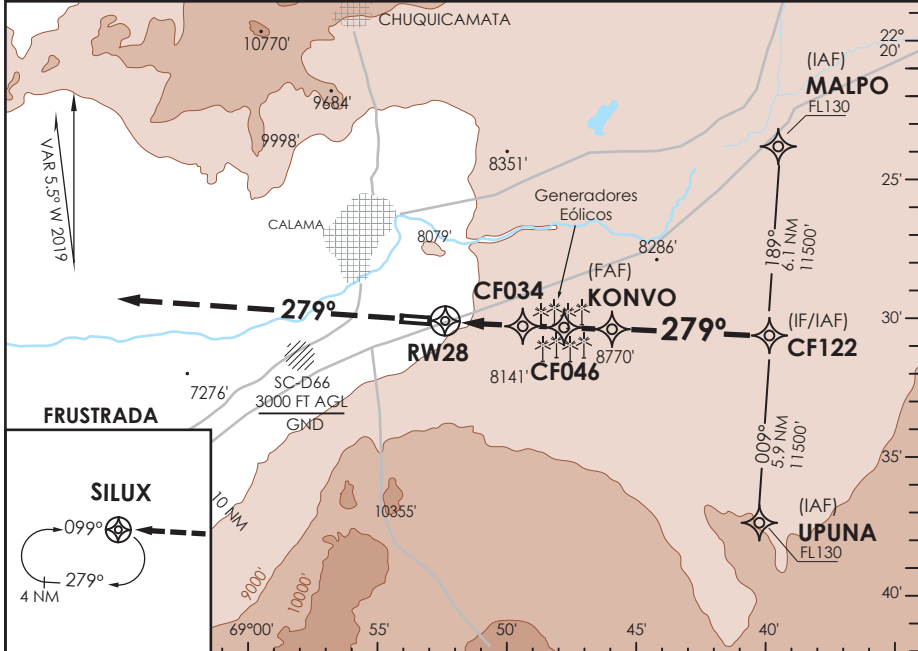


AD. EL LOA CALAMA - CHILE

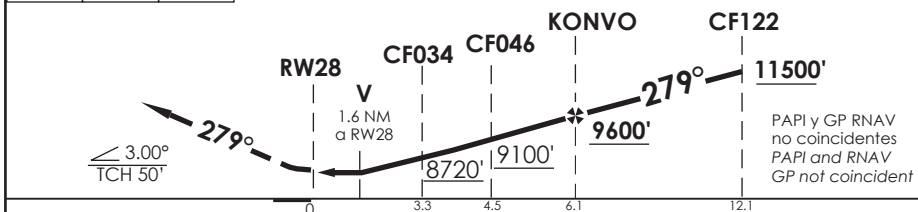
SCCF IAC 5 RNAV (GNSS) Y Rwy 28

APP ANTOFAGASTA RADAR APP Antofagasta Radar	120.9	TORRE CALAMA Calama Tower	118.7	CONTROL TERRESTRE Ground Control	121.8
--	-------	------------------------------	-------	-------------------------------------	-------

RNAV	FINAL APCH CRS 279°	MNM ALT KONVO 9600'	MDA(H) 8200' (569')	AD Elev THR 28 Elev 7631'	 16100 FT
APCH FRUSTRADA: Ascenso a 11500' directo SILUX, ingreso HLDG 099° derecho o según autorización ATC. Missed Apch: Climb to 115000' direct to SILUX, enter on HLDG 099° right or according to ATC clearance.					



11500'		SILUX	Nivel de Transición by ATC Transition Level by ATC	ALT MNM 11500'
--------	---	-------	---	----------------



CATEGORIA	DIRECTO RWY 28 <i>Straight in RWY 28</i>		CIRCULANDO NORTE Circling North	ALTN Alternate Minimums	
	LNAV MDA 8200' (569')				
		ALSF-1	WO ALSF-1		
A	1.2 Km	1.6 Km	9060' (1429')	2.0 Km	VER PAG. GEN 2.19
B				2.4 Km	
C	2.0 Km	2.8 Km		4.8 Km	
D					
- Requiere aprobación RNP APCH. - RNP APCH approval RQRD.					
NGT LDG RWY 28 NA WO PAPI					
Veloc. Terrestre Kts	80	100	120	140	160
Angulo DES 3,0° FPM	425'	531'	637'	743'	849'
MAPt en RW28					

DASA / SECCION AIS-MAP