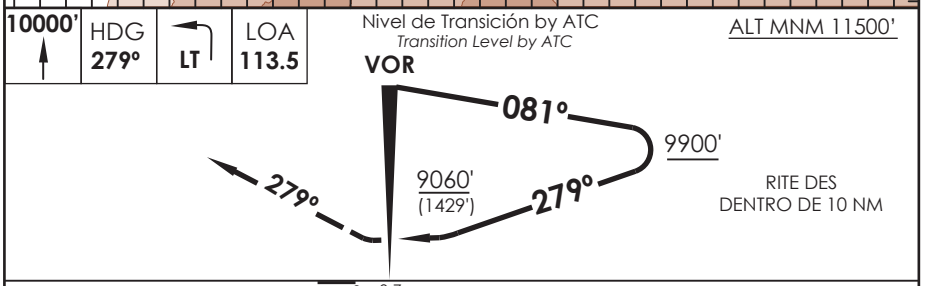
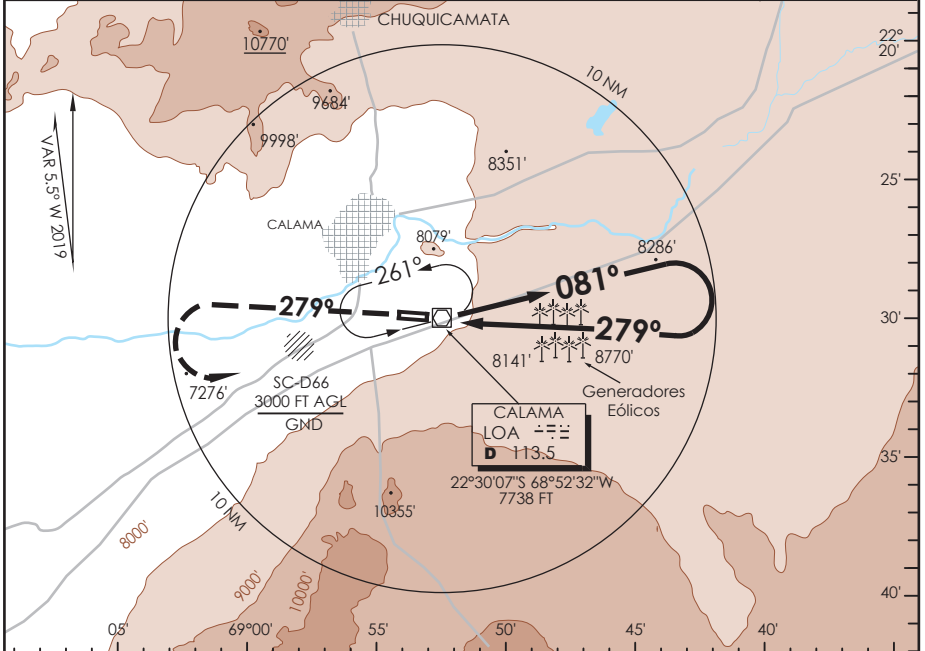


# AD. EL LOA CALAMA - CHILE

SCCF IAC 3  
VOR Y Rwy 28

APP ANTOFAGASTA RADAR APP Antofagasta Radar	120.9	TORRE CALAMA Calama Tower	118.7	CONTROL TERRESTRE Ground Control	121.8
VOR LOA <b>113.5</b>	FINAL APCH CRS <b>279°</b>	WO FAF	MDA(H) <b>9060' (1429')</b>	AD Elev THR 28 Elev <b>7631'</b>	16100 FT MSA 25 NM LOA

APCH FRUSTRADA: Ascenso a 10000' HDG 279°, viraje izquierda en ascenso para 11500' directo LOA VOR o según autorización ATC.  
Missed Apch: Climb to 10000' on HDG 279°, left turn climbing to 11500', direct to LOA VOR or according to ATC clearance.



C A T E G O R I A	DIRECTO RWY 28 <i>Straight in RWY 28</i>		CIRCULANDO NORTE <i>Circling North</i>	ALTN <i>Alternate Minimums</i>
	MDA <b>9060' (1429')</b>			
	ALSF-1	WO ALSF-1		
A	1.2 Km	2.0 Km	2.0 Km	VER PAG. GEN 2.19
B	1.6 Km	2.4 Km	2.4 Km	
C	4.8 Km		4.8 Km	
D	4.8 Km		4.8 Km	
NGT LDG RWY 28 NA WO PAPI				