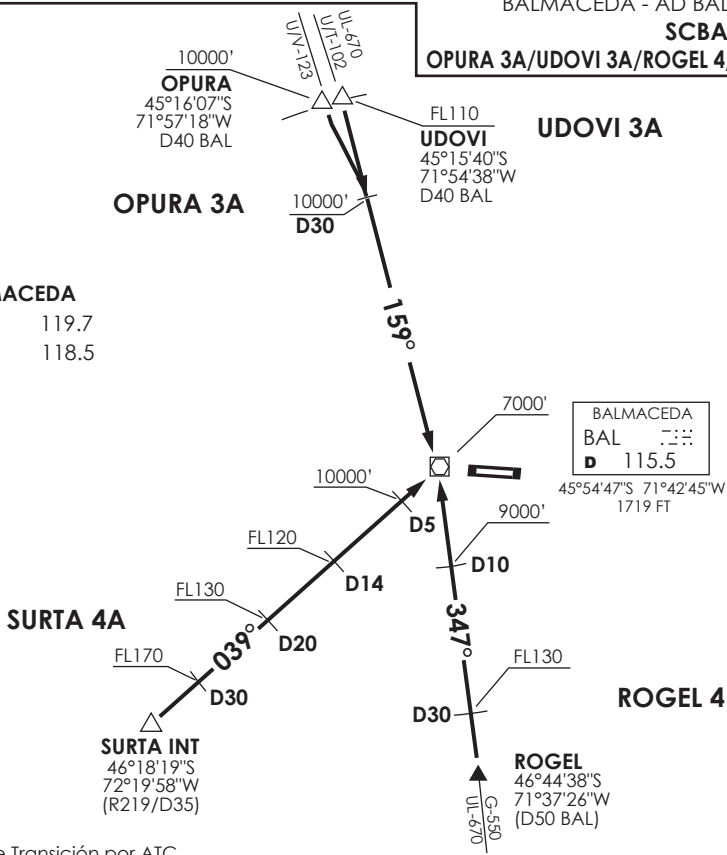


↑
 VAR 9,2° E 2024



BALMACEDA
 RDR 119.7
 TWR 118.5

BALMACEDA
 BAL 115.5
 D 115.5
 45°54'47"S 71°42'45"W
 1719 FT

Nivel de Transición por ATC
 Transition Level by ATC

No se ajusta a escala / Not to scale

STAR OPURA 3A / UDOVI 3A / ROGEL 4 / SURTA 4A

OPURA 3A: En OPURA INT, abandonar AWY para interceptar R339 (TR159°) a BAL VOR. Cruzar OPURA INT 10000 Ft o superior, D30 10000 Ft o superior, BAL VOR 7000FT o superior, luego según autorización ATC.

OPURA 3A: At OPURA INT, leave AWY to intercept R339 (TR159°) to BAL VOR. Cross OPURA INT at or above 10000 Ft, D30 at or above 10000 Ft, BAL VOR/DME at or above 7000FT, then according to ATC clearance.

UDOVI 3A: Desde UDOVI INT, continuar en R339 (TR159°) a BAL VOR. Cruzar UDOVI INT FL110 o superior, D30 10000 Ft o superior, BAL VOR 7000FT o superior, luego según autorización ATC.

UDOVI 3A: From UDOVI INT, continue on R339 (TR159°) to BAL VOR. Cross UDOVI INT at or above FL110, D30 at or above 10000 Ft, BAL VOR at or above 7000FT, then according to ATC clearance.

ROGEL 4: En ROGEL INT, continuar en R167 (TR347°) a BAL VOR. Cruzar ROGEL FL130 o superior, D30 FL130 o superior, D10 9000 Ft o superior, BAL VOR 7000FT o superior, luego según autorización ATC.

ROGEL 4: At ROGEL continue on R167 (TR347°) to BAL VOR. Cross ROGEL at or above FL130, D30 at or above FL130, D10 at or above 9000 Ft, BAL VOR at or above 7000FT, then according to ATC clearance.

SURTA 4A: Desde SURTA INT continuar en R219 (TR039°) a BAL VOR. Cruzar D30 FL170 o superior, D20 FL130 o superior, D14 FL120 o superior, D5 10000 Ft o superior, BAL VOR 7000FT o superior, luego según autorización ATC.

SURTA 4A: From SURTA INT continue on R219 (TR039°) to BAL VOR. Cross D30 at or above FL170, D20 at or above FL130, D14 at or above FL120, D5 at or above 10000 Ft, BAL VOR at or above 7000FT, then according to ATC clearance.