

AD. BALMACEDA BALMACEDA - CHILE

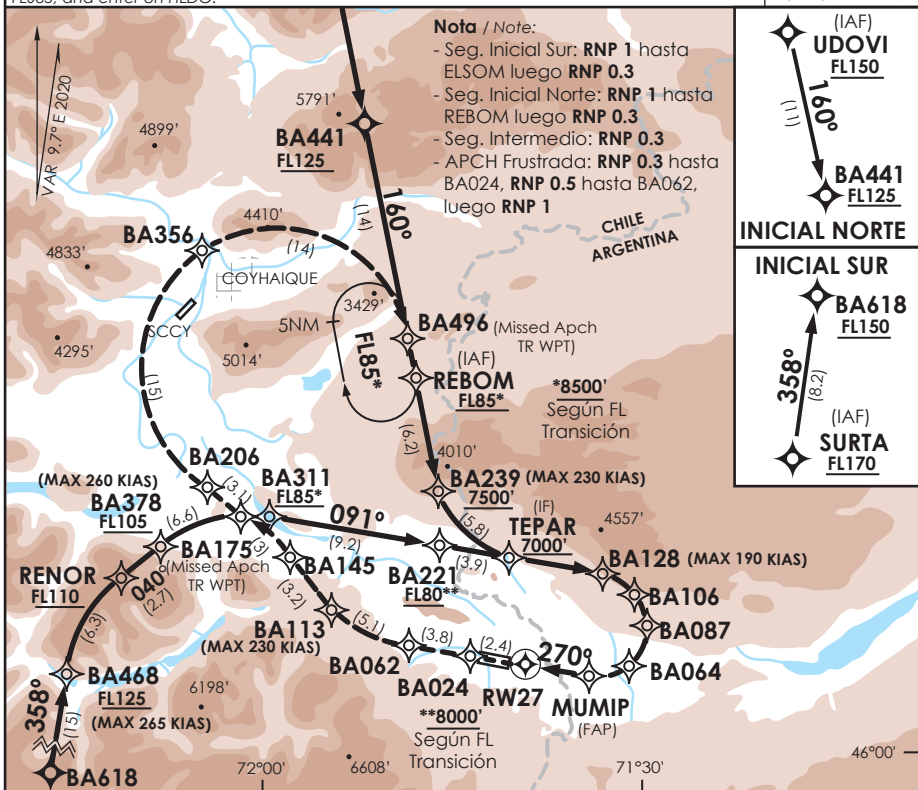
SCBA IAC 6
RNAV (RNP) Z Rwy 27

APP PTO. MONTT RADAR Puerto Montt Approach	128.3 / 119.7	TORRE BALMACEDA Balmaceda Tower	118.5	CONTROL TERRESTRE Ground Control	121.9
---	---------------	------------------------------------	-------	-------------------------------------	-------

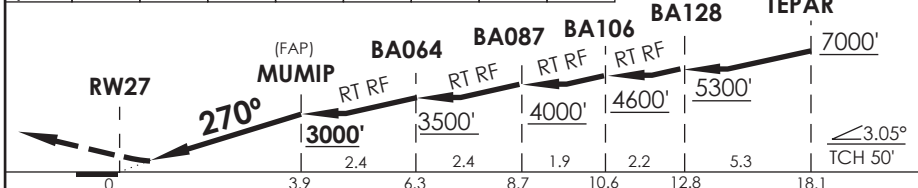
RNAV	FINAL APCH CRS 270°	MNM ALT MUMIP 3000'	DA/H ver mínimos DA/H refer to minimums	AD Elev. 1722' THR 27 Elev. 1667'	
-------------	-------------------------------	-------------------------------	--	---	---

APCH FRUSTRADA: Ascenso en TR270° hacia BA024, para continuar en la trayectoria RNP hacia BA496 - REBOM FL085 e ingresar en HLDG.
Missed Apch: Climb on TR270° to BA024, and then continue on RNP track to BA496 - REBOM FL085, and enter on HLDG.

MSA 25 NM RW27



BA024	BA062	BA113	BA145	BA175	BA206	BA356	BA496	FL085	Nivel de Transición by ATC Transition Level by ATC (IF)
TR270°		RT RF		LT RF		RT RF	RT RF	REBOM	



A B C D	DIRECTO RWY 27 Straight in RWY 27				RNP AR RWY 27 SCBA:	
	RNP 0.1 DA 2030' (363')		RNP 0.30 DA 2110' (443')		Requiere RF. Para sistemas Baro VNAV no compensados proc NA bajo -12°C o sobre 54°C para CAT A/B/C, y bajo -12°C o sobre 30°C para CAT D. Autorización requerida de acuerdo a DAN 06-22.	
	SSALR	WO SSALR	SSALR	WO SSALR	RF required. For uncompensated Baro VNAV systems procedure NA below -12°C or above 54°C for CAT A/B/C, and below -12°C or above 30°C for CAT D. Authorization required according to DAN 06-22.	
	1.2 Km	1.6 Km	1.2 Km	1.6 Km		
		2.0 Km	1.6 Km	2.4 Km		
	Veloc. Terrestre Kts	80	100	120	140	160
	Angulo DES 3,05° FPM	432'	540'	648'	755'	863'
	MAPT en DA					
					MNM ALTN RNP 0.30: VER PAG GEN 2.19 See pag 2.19	
					RQR AUTORIZACIÓN ESPECIAL PARA ACFT Y CREW SPECIAL ACFT AND AIRCREW AUTHORIZATION RQRD	