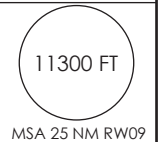


AD. BALMACEDA BALMACEDA - CHILE

SCBA IAC 5
RNAV (RNP) Z Rwy 09

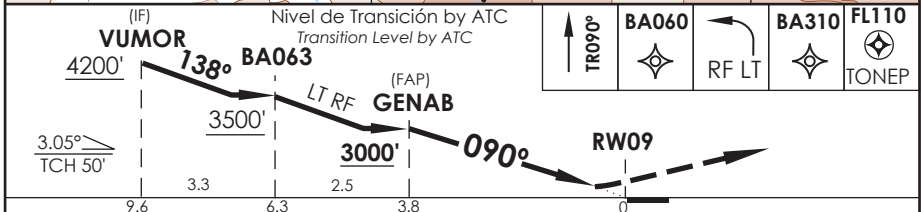
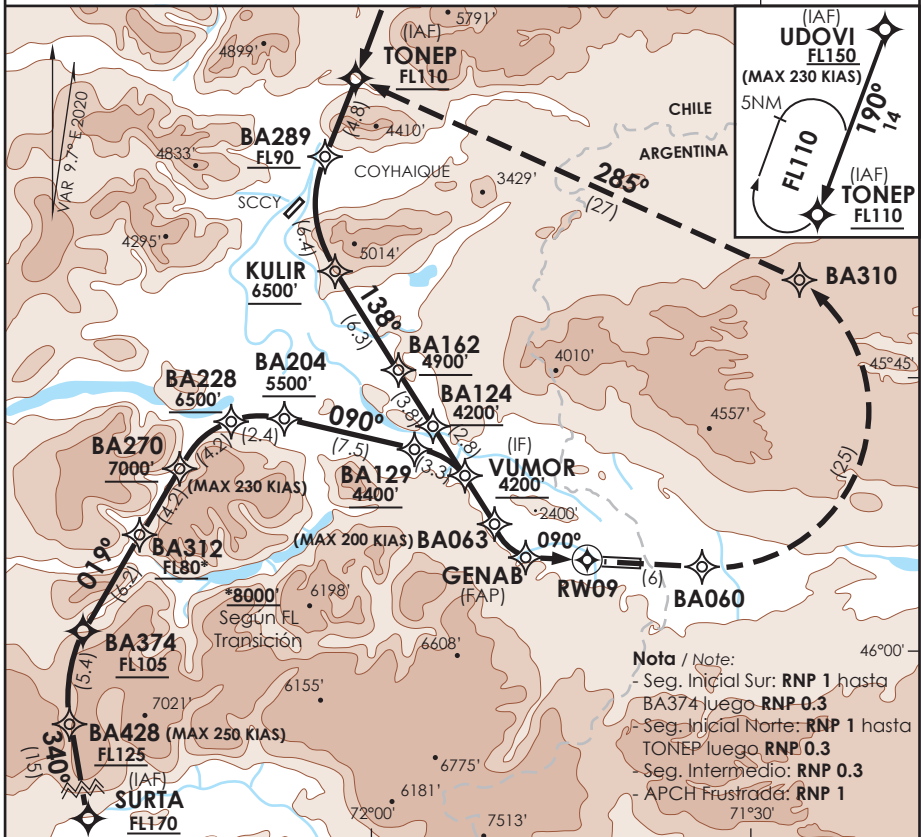
APP PTO. MONIT RADAR Puerto Montt Approach	128.3 / 119.7	TORRE BALMACEDA Balmaceda Tower	118.5	CONTROL TERRESTRE Ground Control	121.9
---	---------------	------------------------------------	-------	-------------------------------------	-------

RNAV	FINAL APCH CRS 090°	MNM ALT GENAB 3000'	DA/H ver mínimos DA/H refer to minimums	AD Elev. THR 09 Elev. 1722'	1722'
-------------	-------------------------------	-------------------------------	--	---------------------------------------	-------



APCH FRUSTRADA: Ascenso en TR090° hacia BA060, posterior LT RF hacia BA310, luego directo a TONEP FL110 e ingresar en HLDG.

Missed Apch: Climb on TR090° to BA060, then via LT RF to BA310, then direct to TONEP FL110, and enter HLDG.



A B C D	DIRECTO RWY 09 Straight in RWY 09			RNP AR RWY 09 SCBA: Requiere RF. Para sistemas Baro VNAV no compensados proc NA bajo -12°C o sobre 54°C para CAT A/B/C, y bajo -12°C o sobre 30°C para CAT D. Autorización requerida de acuerdo a DAN 06-22. RF required. For uncompensated Baro VNAV systems procedure NA below -12°C or above 54°C for CAT A/B/C, and below -12°C or above 30°C for CAT D. Authorization required according to DAN 06-22.
	RNP 0.1 DA 2030'(308')	RNP 0.15 DA 2080'(358')	RNP 0.30 DA 2340'(618')	
1.6 Km			1.6 Km	
2.8 Km				

Veloc. Terrestre Kts	80	100	120	140	160	MNM ALTN RNP 0,30: VER PAG GEN 2.19 See pag 2.19 RQR AUTORIZACIÓN ESPECIAL PARA ACFT Y CREW SPECIAL ACFT AND AIRCREW AUTHORIZATION RQRD
Angulo DES 3,05° FPM	432'	540'	648'	755'	863'	
MAPT en DA						