
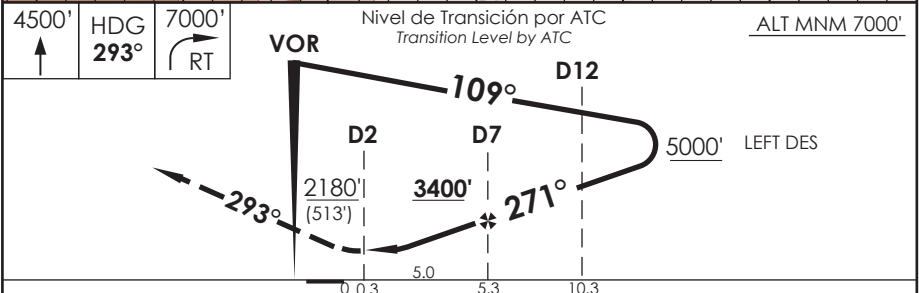
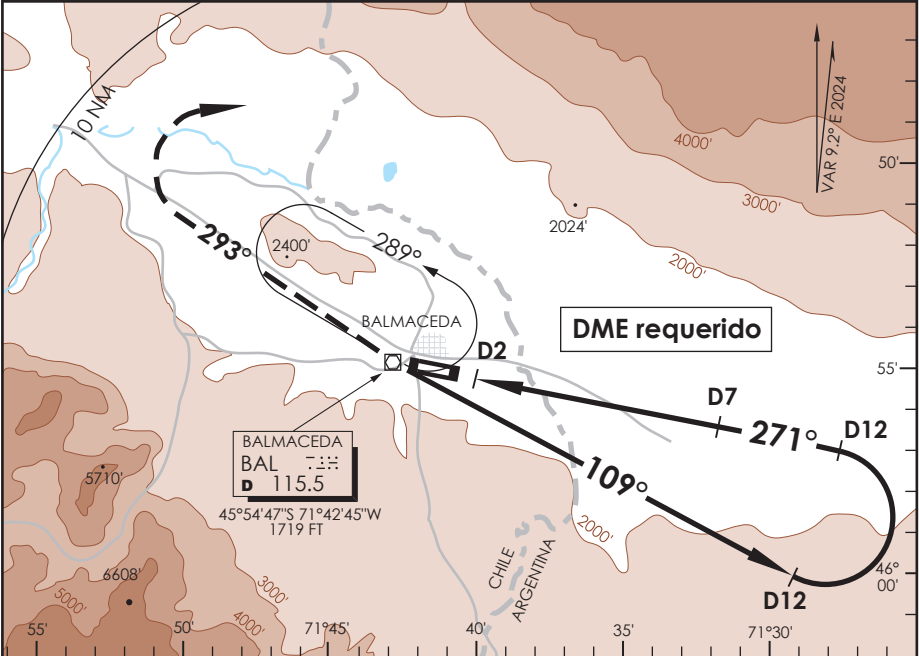


# AD. BALMACEDA BALMACEDA - CHILE

SCBA IAC 2  
VOR Rwy 27

BALMACEDA RDR Balmaceda RDR		119.7	TORRE BALMACEDA Balmaceda Tower		118.5	CONTROL TERRESTRE Ground Control		121.9
VOR BAL <b>115.5</b>	FINAL APCH CRS <b>271°</b>	MNM ALT D7 <b>3400'</b>	MDA(H) <b>2180'(513')</b>		AD Elev 1722'	THR 27 Elev <b>1667'</b>		11300 FT 
APCH FRUSTRADA: Ascenso 4500' HDG 293° dentro de 10 NM, viraje derecha directo BAL VOR, ascenso 7000 Ft según autorización ATC. Missed Apch: Climb to 4500' on HDG 293° within 10 NM, right turn direct to BAL VOR, climb to 7000' according to ATC clearance.								
								MSA 25 NM BAL



C R O M E N T E	DIRECTO RWY 27 <i>Straight in RWY 27</i>		CIRCULANDO <i>Circling</i>	ALTN <i>Alternate Minimums</i>
	MDA <b>2180' (513')</b>			
A	1.2 Km	1.6 Km	N A	VER PAG. GEN 2.19
B				
C	1.6 Km	2.4 Km		
D				

Veloc. Terrestre Kts	80	100	120	140	160
Angulo DES 3.0° FPM	427'	531'	637'	743'	849'
FAF to MAPt 5.0 NM	3:45	3:00	2:30	2:08	1:52

DASA / SECCION ASMAP