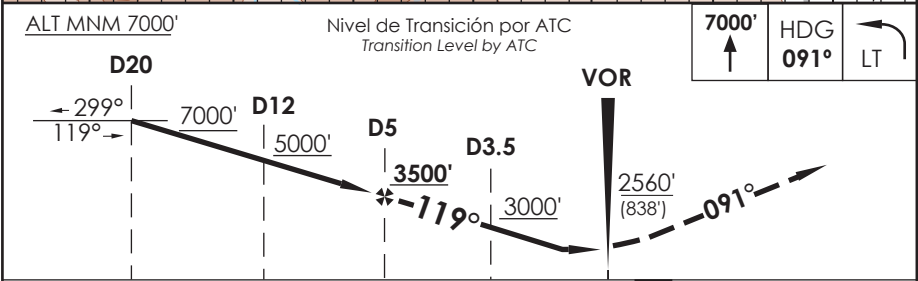
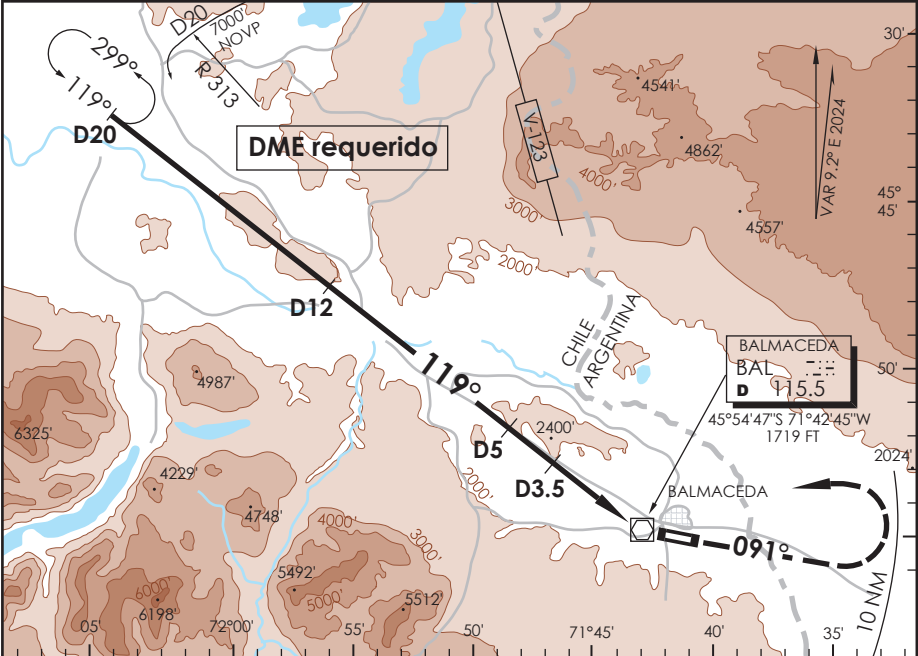


AD. BALMACEDA
BALMACEDA - CHILE

SCBA IAC 1
VOR Rwy 09

BALMACEDA RADAR Balmaceda Radar	119.7	TORRE BALMACEDA Balmaceda Tower	118.5	CONTROL TERRESTRE Ground Control	121.9
VOR BAL 115.5	FINAL APCH CRS 119°	MNM ALT D5 3500'	MDA(H) 2560' (838')	AD Elev 1722' THR 09 Elev 1722'	11300 FT MSA 25 NM BAL
APCH FRUSTRADA: Ascenso 7000' HDG 091° dentro de 10 NM, viraje izquierda directo VOR BAL, luego según autorización ATC. Missed Apch: Climb to 7000' on HDG 091° within 10 NM, left turn direct to BAL VOR, then according to ATC clearance.					



C R O M E N T A	DIRECTO RWY 09 <i>Straight in RWY 09 *</i>	CIRCULANDO Circling	ALTN Alternate Minimums
	MDA 2560' (838')		
A	1.6 Km	N A	VER PAG. GEN 2.19
B	2.0 Km		SEE PAGE GEN 2.19

* Desalineado 28° respecto a RCL
 * Offset 28° from RWY center line

Veloc. Terrestre Kts	80	100	120	140	160
Angulo DES 3.1° FPM	439'	548'	658'	768'	878'
Dist. FAF a MAPT 5 NM	3:45	3:00	2:30	2:08	1:53

DASA / SECCION AIS-MAP