

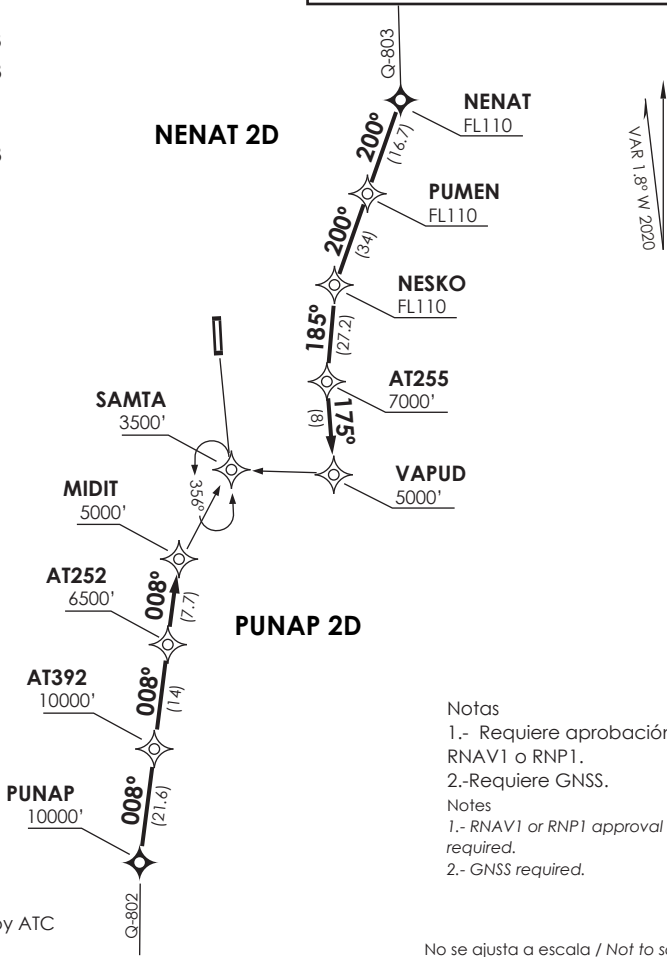
**IQUIQUE**

APP 120.3

RDR 128.3

**ATACAMA**

TWR 118.3



- Notas  
 1.- Requiere aprobación RNAV1 o RNP1.  
 2.-Requiere GNSS.
- Notes  
 1.- RNAV1 or RNP1 approval required.  
 2.- GNSS required.

Nivel de Transición by ATC  
 Transition Level by ATC

No se ajusta a escala / Not to scale

**STAR NENAT 2D / PUNAP 2D RNAV**

**NENAT 2D:** Desde NENAT proceder directo a PUMEN-NESKO-AT255-VAPUD. Cruzar NENAT a FL110 o superior, PUMEN FL110 o superior, NESKO FL110 o superior, AT255 7000 Ft o superior VAPUD 5000 Ft o superior, luego según autorización ATC.

**NENAT 2D:** From NENAT proceed direct to PUMEN-NESKO-AT255-VAPUD. Cross NENAT at or above FL110, PUMEN at or above FL110, NESKO at or above FL110, AT255 at or above 7000 Ft, VAPUD at or above 5000 Ft, then according to ATC clearance.

**PUNAP 2D:** Desde PUNAP proceder directo a AT392-AT252-MIDIT. Cruzar PUNAP 10000 Ft o superior, AT392 10000 Ft o superior, AT252 6500 Ft o superior, MIDIT 5000 Ft o superior, luego según autorización ATC.

**PUNAP 2D:** From PUNAP proceed direct to AT392-AT252- MIDIT. Cross PUNAP at or above 10000 Ft, AT392 at or above 10000 Ft, AT252 at or above 6500 Ft, MIDIT at or above 5000 Ft, then according to ATC clearance.