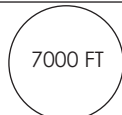
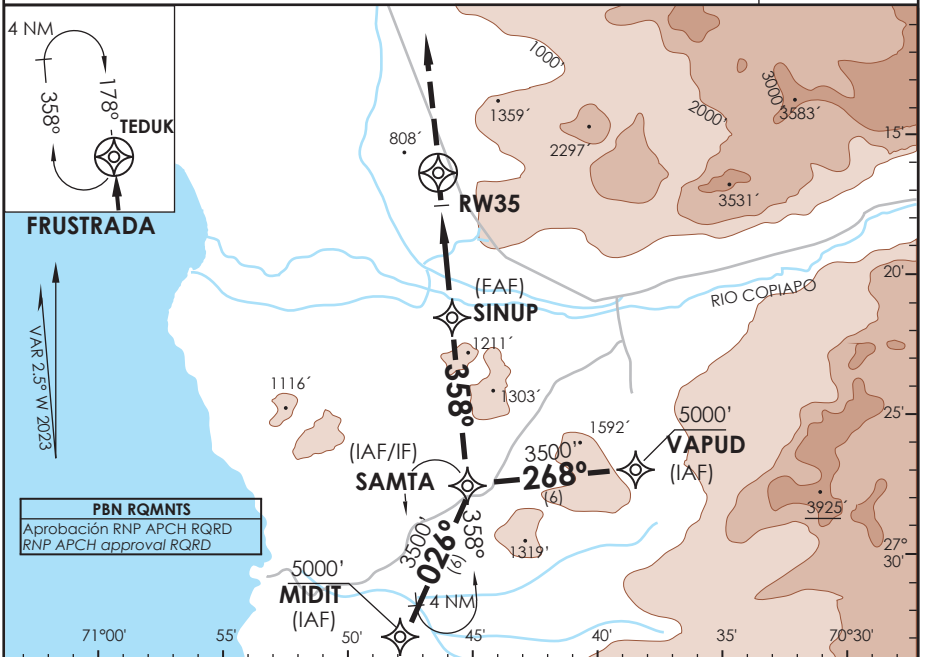



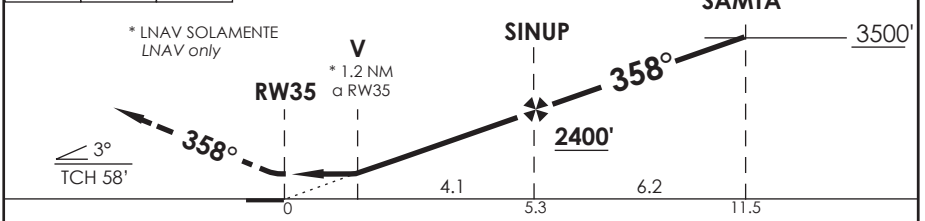
AD DESIERTO DE ATACAMA CALDERA - CHILE

SCAT IAC 6
RNP Rwy 35

APP IQUIQUE RADAR <i>Iquique Radar Approach</i>	120.3/128.3	TORRE ATACAMA <i>Atacama Tower</i>	118.3	CONTROL TERRESTRE <i>Ground Control</i>	121.6
RNP	FINAL APCH CRS 358°	MNM ALT SINUP 2400'	LNAV/VNAV DA (H) 1100'(430')	AD Elev. 670' THR 35 Elev. 670'	 MSA 25 NM RW35
APCH FRUSTRADA: Ascenso 3500' directo a TEDUK, ingreso HLDG 178° derecho o según autorización ATC. <i>Missed Apch: Climb to 3500' direct to TEDUK, enter on HLDG 178° right or according to ATC clearance.</i>					



3500'		TEDUK	Nivel de Transición por ATC <i>Transition Level by ATC</i>	ALT MNM 3500'
--------------	---	--------------	---	---------------



Categoría	DIRECTO RWY 35 <i>Straight in RWY 35</i>		CIRCULANDO OESTE <i>Circling west</i>	ALTN <i>Alternate Minimums</i>
	LNAV/VNAV DA 1100'(430')	LNAV MDA 1100'(430')		
A	1.6 Km	1.6 Km	1120' (450')	VER PAG. GEN 2.19
B				
C	2.0 Km	2.0 Km	1220' (550')	
D				

PROC BARO-VNAV NA BLW 0°C ó ABV 39°C					
Veloc. Terrestre Kts	80	100	120	140	160
Angulo DES 3,0°	425'	525'	631'	736'	841'
MAPT en RW35					

DASA / SECCION AB-MAP