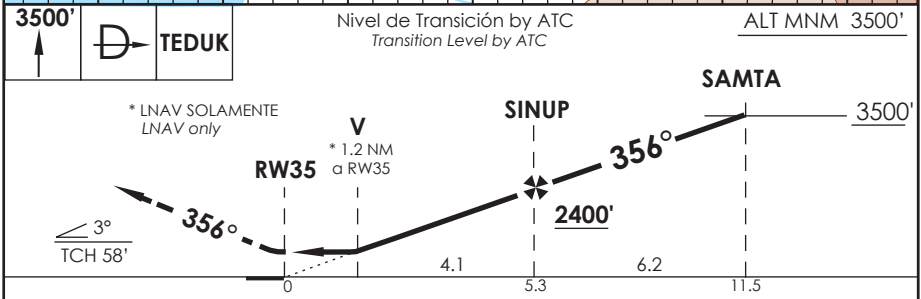
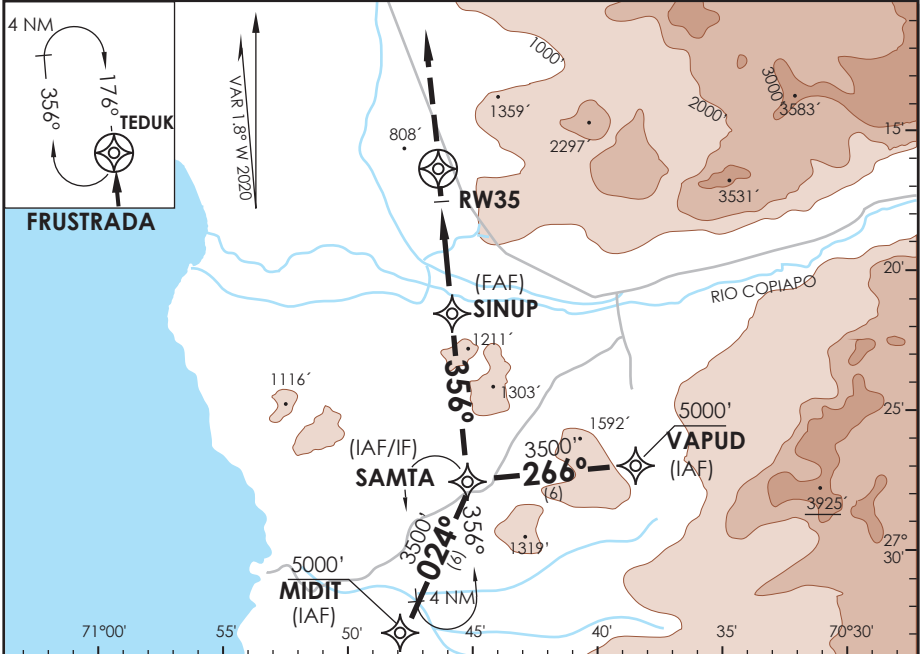


AD DESIERTO DE ATACAMA CALDERA - CHILE

SCAT IAC 5 RNAV (GNSS) Rwy 35

APP IQUIQUE RADAR <i>Iquique Radar Approach</i>	120.3 128.3	TORRE ATACAMA <i>Atacama Tower</i>	118.3	CONTROL TERRESTRE <i>Ground Control</i>	121.6
RNAV	FINAL APCH CRS 356°	MNM ALT SINUP 2400'	LNAV/VNAV DA (H) 1100'(430')	AD Elev. 670' THR 35 Elev. 670'	7000 FT MSA 25 NM RW35
APCH FRUSTRADA: Ascenso 3500' directo a TEDUK, ingreso HLDG 176° derecho o según autorización ATC. <i>Missed Apch: Climb to 3500' direct to TEDUK, enter on HLDG 176° right or according to ATC clearance.</i>					



C A T A	DIRECTO RWY 35 <i>Straight in RWY 35</i>		CIRCULANDO OESTE <i>Circling west</i>	ALTN <i>Alternate Minimums</i>
	LNAV/VNAV DA 1100'(430')	LNAV MDA 1100'(430')		
A	1.6 Km	1.6 Km	1120' (450')	VER PAG. GEN 2.19
B			2.4 Km	
C	2.0 Km	2.0 Km	1220' (550')	
D			3.2 Km	

-Requiere aprobación RNP APCH. -RNP APCH approval RQRD.					Para sistemas Baro VNAV no compensados proc NA bajo 0°C o sobre 39°C. <i>For uncompensated Baro VNAV systems procedure NA below 0°C or above 39°C.</i>				
Veloc. Terrestre Kts	80	100	120	140	160				
Angulo DES 3,0°	425'	525'	631'	736'	841'				
MAPt en RW35									