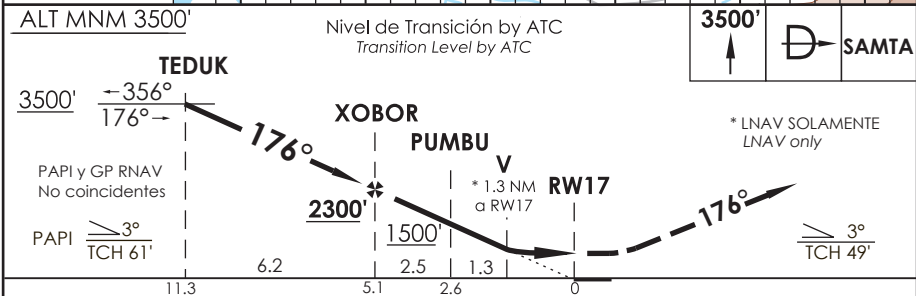
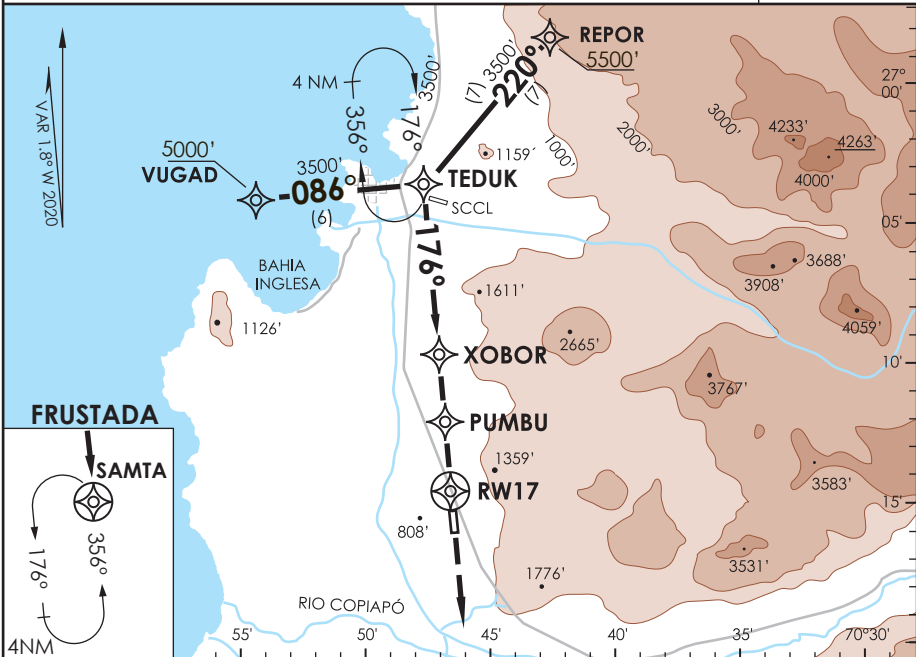


AD. DESIERTO DE ATACAMA CALDERA - CHILE

SCAT IAC 4 RNAV (GNSS) Rwy 17

APP IQUIQUE RADAR Iquique Radar Approach	120.3 128.3	TORRE ATACAMA Atacama Tower	118.3	CONTROL TERRESTRE Ground Control	121.6
RNAV	FINAL APCH CRS 176°	MNM ALT XOBOR 2300'	LNAV/VNAV DA(H) 960'(340')	AD Elev. 670' THR 17 Elev. 620'	7000 FT MSA 25 NM RW17
APCH FRUSTRADA: Ascenso 3500' directo a SAMTA, ingrese HLDG 356° izquierdo o según autorización ATC. Missed Apch: Climb to 3500' direct to SAMTA, enter on HLDG356° left or according to ATC clearance.					



C A T E G O R I A	DIRECTO RWY 17 Straight in RWY 17				CIRCULANDO OESTE Circling west	ALTN Alternate Minimums
	LNAV/VNAV DA 960'(340')		LNAV MDA 1080'(460')			
A	1.2 Km	1.6 Km	1.2 Km	1.6 Km	1120'	VER PAG. GEN 2.19
B			1120'	1.6 Km		
C			(450')	2.4 Km		
D			(550')	3.2 Km		

-Requiere aprobación RNP APCH. -RNP APCH approval RQRD.					Para sistemas Baro VNAV no compensados proc NA bajo 0°C o sobre 38°C. For uncompensated Baro VNAV systems procedure NA below 0°C or above 38°C.	
Veloc. Terrestre Kts	80	100	120	140	160	
Angulo DES 3,0°	425'	525'	631'	736'	841'	
MAPt en RW17						