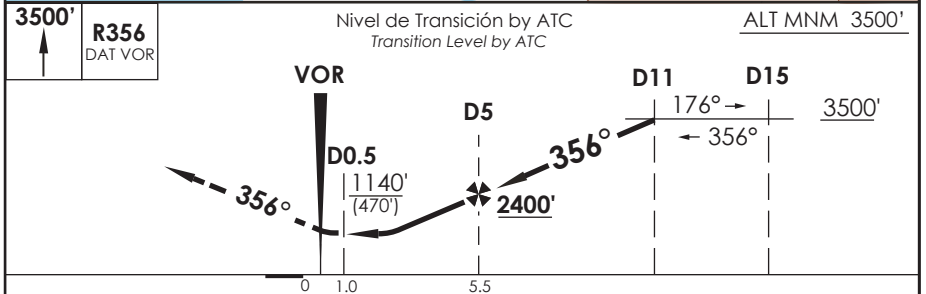
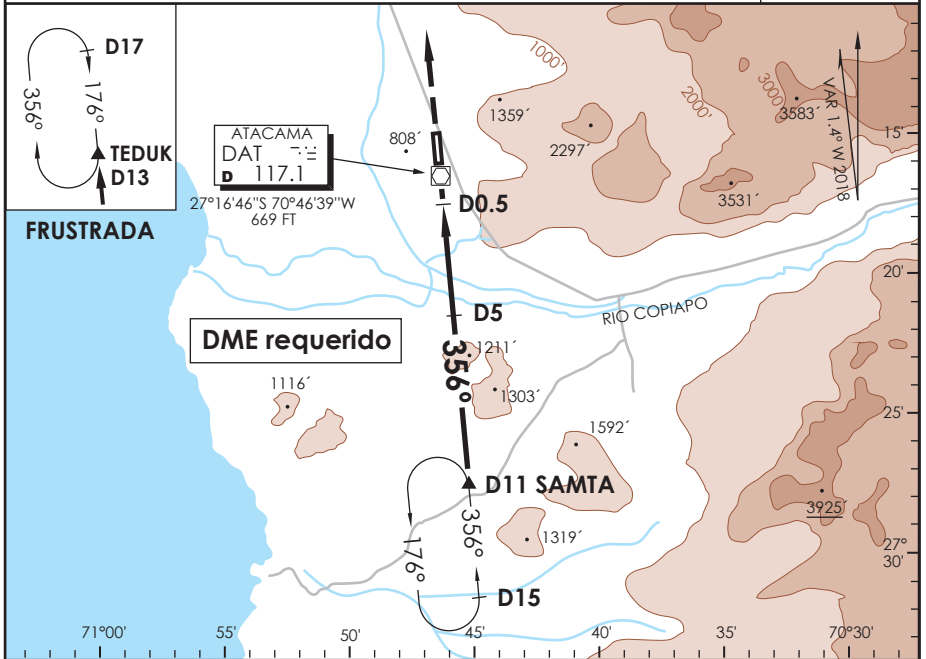


AD. DESIERTO DE ATACAMA CALDERA - CHILE

SCAT IAC 3
VOR Rwy 35

APP IQUIQUE RADAR Iquique Radar Approach	120.3 128.3	TORRE ATACAMA Atacama Tower	118.3	CONTROL TERRESTRE Ground Control	121.6
VOR DAT 117.1	FINAL APCH CRS 356°	MNM ALT D5 2400'	MDA 1140' (470')	AD Elev. 670' THR 35 Elev. 670'	7000 FT MSA 25 NM DAT
APCH FRUSTRADA: Ascenso 3500' R356 VOR DAT, ingrese HLDG TEDUK 176° derecho o según autorización ATC. Missed Apch: Climb to 3500' on R356 DAT VOR, enter on HLDG TEDUK 176° right or according to ATC clearance.					



C I R C U L A N D O	DIRECTO RWY 35 <i>Straight in RWY 35</i>	CIRCULANDO OESTE Circling West	ALTN Alternate Minimums
	MDA 1140' (470')		
A	1.6 Km	1140' (470')	VER PAG. GEN 2.19
B		1.6 Km	
C		2.4 Km	3.2 Km
D		2.4 Km	

Veloc. Terrestre Kts	80	100	120	140	160
Angulo DES 2,88°	404'	509'	611'	713'	815'
MAPt en D0.5					

DASA / SECCION AS-MAP