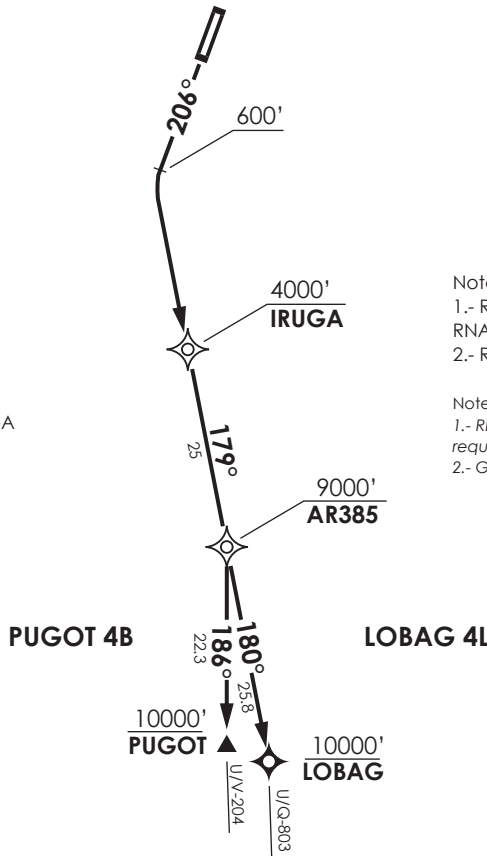


VAR 6° W 2024

MNM Razón ASC:
 MNM Climb Rate:
 270 FT/NM TIL IRUGA



ARICA
 GNDC 121.9
 TWR 118.5
 APP 119.9

Notas
 1.- Requiere aprobación
 RNAV 1 ó RNP1
 2.- Requiere GNSS

Notes
 1.- RNAV 1 or RNP 1 approval
 required
 2.- GNSS required

Altitud de Transición 10000 FT
 Transition Altitude 10000 FT

No se ajusta a escala / Not to scale

LOBAG 4L / PUGOT 4B RNAV RWY20

LOBAG 4L: Ascender en TR206° hasta 600 FT, viraje izquierda para continuar via IRUGA - AR385 - LOBAG para interceptar AWY. Cruzar IRUGA 4000 FT o superior, AR385 9000 FT o superior, LOBAG 10000 FT o superior.

LOBAG 4L: Climb on TR 206° until 600 FT, left turn to continue via IRUGA - AR385 - LOBAG to intercept AWY. Cross IRUGA at or above 4000 FT, AR385 at or above 9000 FT, LOBAG at or above 10000 FT.

PUGOT 4B: Ascender en TR206° hasta 600 FT, viraje izquierda para continuar via IRUGA - AR385 - PUGOT para interceptar AWY. Cruzar IRUGA 4000 FT o superior, AR385 9000 FT o superior, PUGOT 10000 FT o superior.

PUGOT 4B: Climb on TR 206° until 600 FT, left turn to continue via IRUGA - AR385 - PUGOT to intercept AWY. Cross IRUGA at or above 4000 FT, AR385 at or above 9000 FT, PUGOT at or above 10000 FT