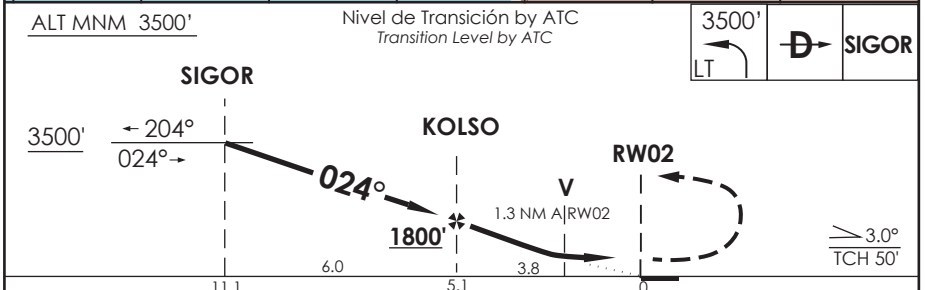
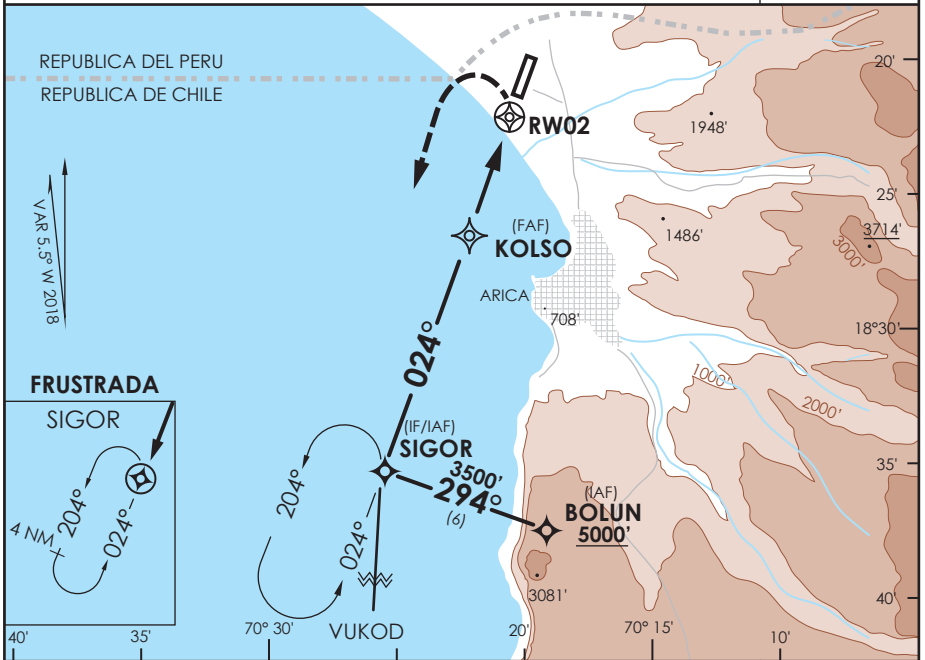


AP. CHACALLUTA
ARICA - CHILE

SCAR IAC 3
RNAV (GNSS) Rwy 02

APP ARICA Arica Approach	119.9	TORRE ARICA Arica Tower	118.5	CONTROL TERRESTRE Ground Control	121.9
RNAV	FINAL APCH CRS 024°	MNM ALT KOLSO 1800'	LNAV MDA (H) 580' (457')	AD Elev THR 02 Elev 166' 123'	 MSA 25 NM RW02
APCH FRUSTRADA: Viraje izquierda en ascenso para 3500' directo SIGOR Ingrese HLDG 024° izquierdo, luego según autorización ATC. Missed Apch: Left turn climbing to 3500' direct SIGOR, enter on HLDG 024° left, then according to ATC clearance.					



CATEGORIA	DIRECTO RWY 02 Straight in RWY 02	CIRCULANDO ESTE Circling East	ALTN Alternate Minimums		
	LNAV MDA 580' (457')				
	A	1.6 Km	640' (474') 960' (794')	1.6 Km	
	B	2.4 Km	1120' (954') 1460' (1294')	4.8 Km	
Requiere aprobación RNP APCH RNP APCH RQRD					
Veloc. Terrestre Kts	80	100	120	140	160
Angulo DES 3.0° FPM	425'	531'	637'	743'	849'
MAPt en RW02					

DASA / SECCION AIS-WAP