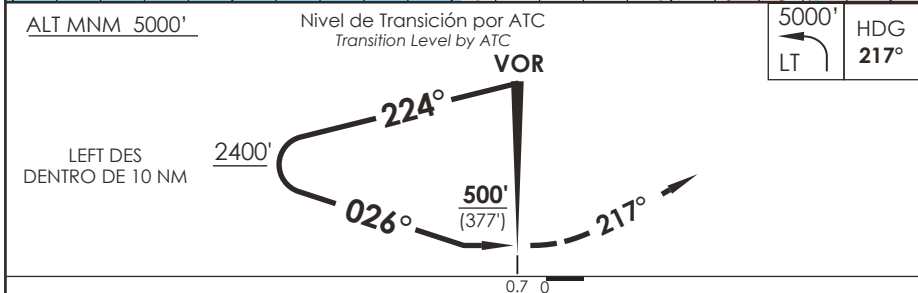
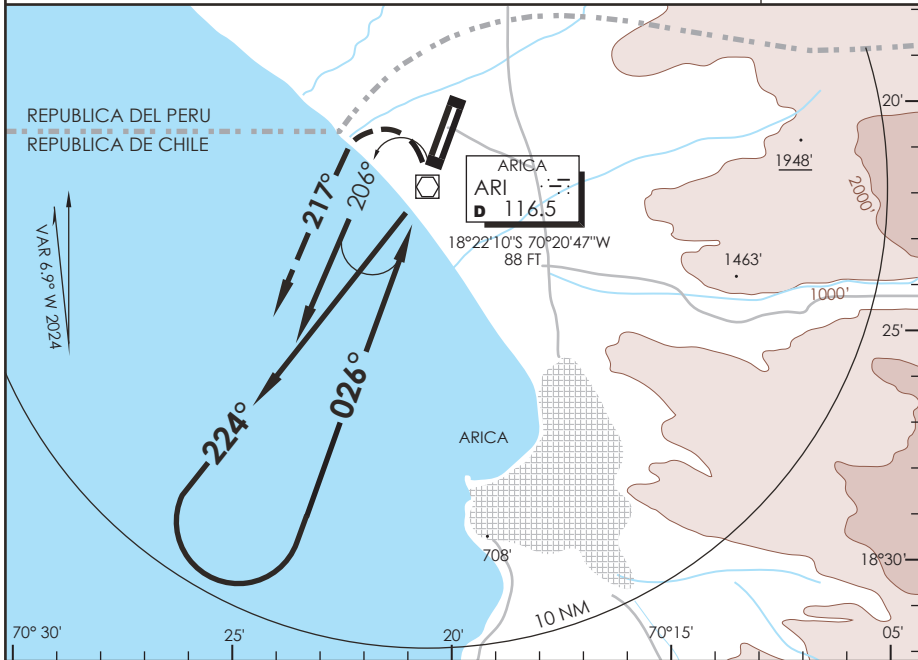


AP. CHACALLUTA
ARICA - CHILE

SCAR IAC 2
VOR Y Rwy 02

APP ARICA Arica Approach	119.9	TORRE ARICA Arica Tower	118.5	CONTROL TERRESTRE Ground Control	121.9
VOR ARI 116.5	FINAL APCH CRS 026°	WO FAF	MDA (H) 500' (377')	AD Elev 166' THR 02 Elev 123'	11000 FT MSA 25 NM ARI
APCH FRUSTRADA: Viraje izquierda HDG 217° en ascenso para 5000', luego viraje izquierda directo ARI VOR e ingreso HLDG 026° izquierdo. Missed Apch: Left turn HDG 217° climbing to 5000', then left turn direct to ARI VOR and enter on HLDG 026° left.					



C R O C H E R E A	DIRECTO RWY 02 Straight in RWY 02	CIRCULANDO ESTE Circling East	ALTN Alternate Minimums
	MDA 500' (377')		
A	1.6 Km	640' (474')	1.6 Km
B		960' (794')	
C	2.0 Km	1120' (954')	4.8 Km
D		1460' (1294')	
VER PAG. GEN 2.19			