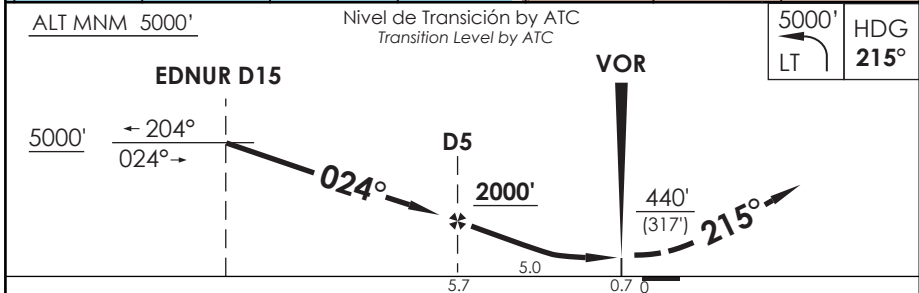
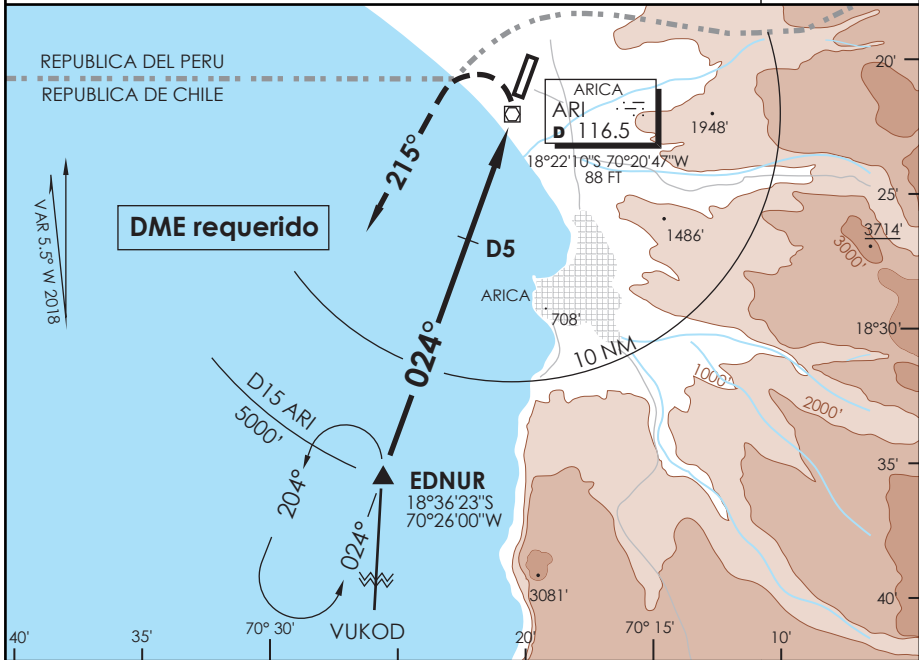


APP ARICA Arica Approach	119.9	TORRE ARICA Arica Tower	118.5	CONTROL TERRESTRE Ground Control	121.9
VOR ARI 116.5	FINAL APCH CRS 024°	MNM ALT D5 2000'	MDA (H) 440' (317')	AD Elev THR 02 Elev	166' 123'
APCH FRUSTRADA: Viraje izquierda HDG 215° en ascenso para 5000', luego según autorización ATC. Missed Apch: Left turn HDG 215° climbing to 5000', then according to ATC clearance.					11000 FT
					MSA 25 NM ARI



C A T E G O R I A	DIRECTO RWY 02 Straight in RWY 02	CIRCULANDO ESTE Circling East	ALTN Alternate Minimums
	MDA 440' (317')		
	A	640' (474')	1.6 Km
	B	960' (794')	
C	1120' (954')	4.8 Km	
D	1460' (1294')		
1.6 Km			
VER PAG. GEN 2.19			

Veloc. Terrestre Kts	80	100	120	140	160
Angulo DES 3,02° PFM	427'	534'	641'	748'	855'
FAF to MAP 5.0 NM	3:45	3:00	2:30	2:08	1:52

DASA / SECCION AIS-WAP