

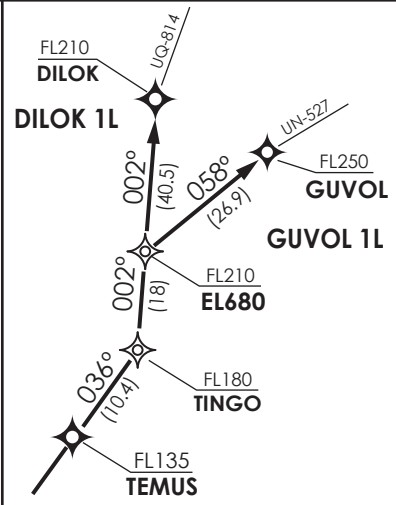
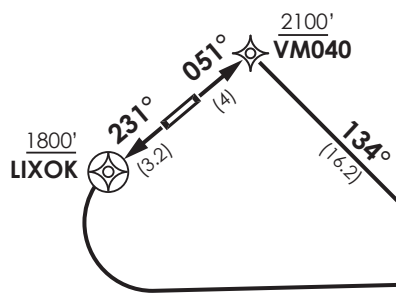
↑
 VAR 1,1° E 2024

VIÑA DEL MAR
 GNDC 121.85
 TWR 118.9
 APP 129.3

SANTIAGO
 CTL 129.1

REQUIERE VIGILANCIA ATS DESDE VM200
 ATS SURVEILLANCE REQUIRED FM VM200

MNM Razón ASC:
 MNM Climb Rate:
RWY 05/23: 420 FT/NM BTN DEP - VM200
 BTN VM306 - FL180



Distancia directa:
 Direct distance:
 LIXOK - VM200: 19 NM

- Notas
- 1.- Requiere aprobación RNAV 1 ó RNP 1
 - 2.- Requiere GNSS
- Notes
- 1.- RNAV 1 or RNP 1 approval required
 - 2.- GNSS required

Altitud de Transición 10000FT
 Transition Altitude 10000FT

Not to scale / No se ajusta a escala

DILOK 1L / GUVOL 1L RNAV

DEP RWY 23: Asc en TR231° hasta LIXOK, viraje izquierda DCT VM200. Cruzar LIXOK 1800 FT o superior, VM200 a 10000 FT, luego...
TAKE-OFF RWY 23: Climb on TR231° until LIXOK, turn left direct to VM200. Cross LIXOK at or above 1800 FT, VM200 at 10000 FT, then...

DEP RWY 05: ASC en TR051° hasta VM040, viraje derecha TR134° hasta VM200. Cruzar VM040 2100 FT o superior, VM200 a 10000 FT, luego...
TAKE-OFF RWY 05: Climb on TR051° until VM040, turn right on TR134° to VM200. Cross VM040 at or above 2100FT, cross VM200 at 10000 FT, then...

DILOK 1L: Continúe DCT VM306 - TEMUS - TINGO - EL680 - DILOK. Cruce VM306 a 10000 FT, TEMUS FL135 o superior, TINGO FL180 o superior, EL680 FL210 o superior, DILOK FL 210 o superior.

DILOK 1L: Continue DCT VM306 - TEMUS - TINGO - EL680 - DILOK. Cross VM306 at 10000 FT, TEMUS at or above FL135, TINGO at or above FL180, EL680 at or above FL210, DILOK at or above FL210.

GUVOL 1L: Continúe DCT VM306 - TEMUS - TINGO - EL680 - GUVOL. Cruce VM306 a 10000 FT, TEMUS FL135 o superior, TINGO FL180 o superior, EL680 FL210 o superior, GUVOL FL250 o superior.

GUVOL 1L: Continue DCT VM306 - TEMUS - TINGO - EL680 - GUVOL. Cross VM306 at 10000 FT, TEMUS at or above FL135, TINGO at or above FL180, EL680 at or above FL210, GUVOL at or above FL250.

DASA / SECCION AIS-MAP