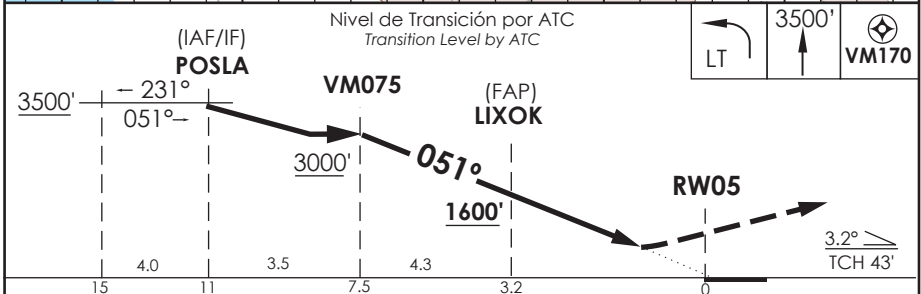
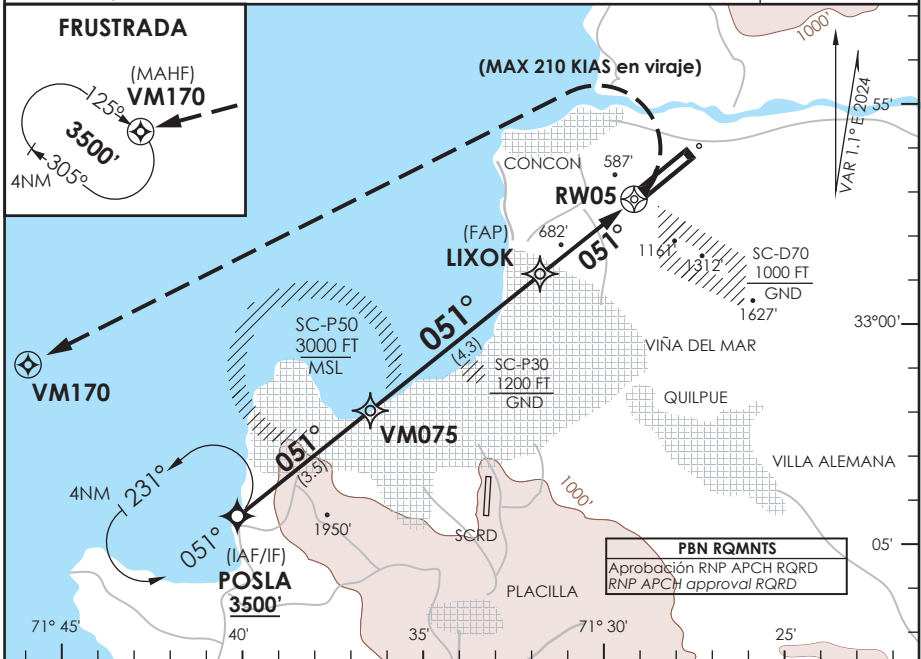


# AD. VIÑA DEL MAR VIÑA DEL MAR - CHILE

## RNP Z Rwy 05 (LNAV/VNAV only)

SCVM IAC 8

APP VIÑA DEL MAR Viña del Mar Approach	129.3	TORRE VIÑA DEL MAR Viña del Mar Tower	118.9	CONTROL TERRESTRE Ground Control	121.85
<b>RNP</b>	FINAL APCH CRS <b>051°</b>	MNM ALT LIXOK <b>1600'</b>	LNAV/VNAV DA(H) <b>1060'(599')</b>	AD Elev THR 05 Elev <b>461'</b>	<b>461'</b>
APCH FRUSTRADA: Viraje izquierda inmediato, ascenso 3500' DCT a VM170, ingrese en HLDG 125° derecho o según autorización ATC. Missed Apch: Turn left immediately and climb to 3500' DCT to VM170, enter on HLDG 125° right or according to ATC clearance.					9500 FT MSA 25 RW05



CATEGORÍA	DIRECTO RWY 05 Straight in RWY 05		CIRCULANDO NOROESTE Circling Northwest	ALTN Alternate Minimums	
	LNAV/VNAV DA 1060'(599')				
	A	SSALF	WO SSALF		
B	2.6 Km	3.0 Km	1060' (599')	3.0 Km	VER PAG. GEN 2.19
C					

Cruce SC-P50 permitido ACFT en APCH IFR en CTC con SCVM TWR Crossing of SC-P50 permitted ACFT on IFR APCH in CTC with SCVM TWR					Para sistemas Baro VNAV no compensados PROC NA BLW 0°C ó ABV 32°C.				
Veloc. Terrestre Kts	80	100	120	140	160				
GP 3.2° FPM	453'	566'	679'	793'	906'				
MAPt en DA									

CAMBIO: TR / VAR  
Change: TR / VAR

DGAC AMDT 98

28 NOVIEMBRE 2024

DASA / SECCION AIS-MAP