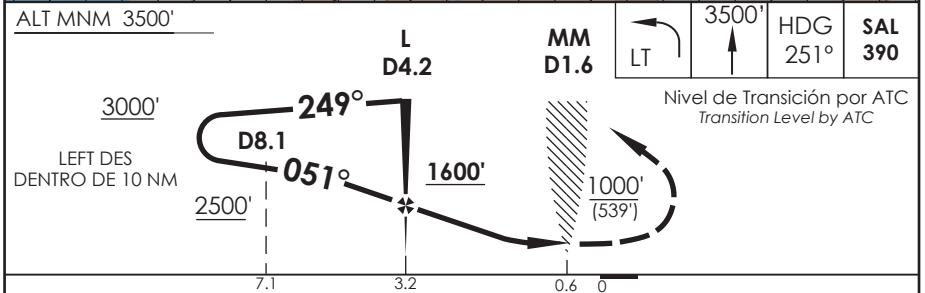
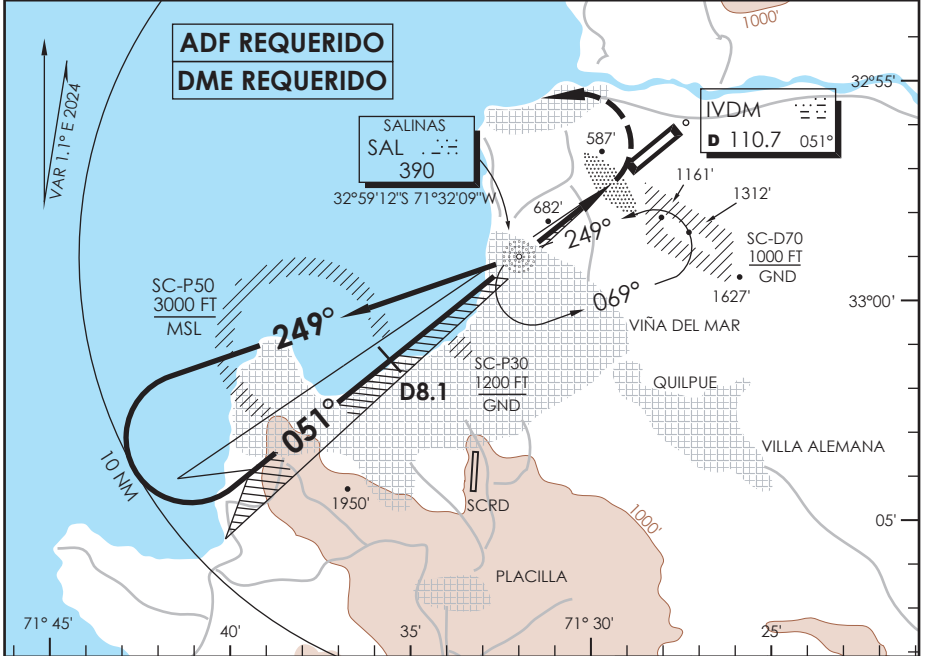


AD. VIÑA DEL MAR VIÑA DEL MAR - CHILE

SCVM IAC 5
LOC Rwy 05

| | | | | | |
|---|-------------------------------|--|---------------------------|-------------------------------------|----------------------------|
| APP VIÑA DEL MAR Viña del Mar Approach | 129.3 | TORRE VIÑA DEL MAR Viña del Mar Tower | 118.9 | CONTROL TERRESTRE Ground Control | 121.85 |
| LOC IVDM 110.7 | FINAL APCH CRS 051° | MNM ALT D4.2 1600' | MDA 1000'(539') | AD Elev 461' | THR 05 Elev 461' |
| APCH FRUSTRADA: Viraje izquierda inmediato, ascenso a 3500' en HDG 251°, luego directo a SAL L, ingrese HLDG 249° izquierdo o según autorización ATC. Missed Apch: Turn left immediately and climb to 3500' on HDG 251°, then direct to SAL L enter on HLDG 249° left or according to ATC clearance. | | | | | 9500 FT MSA 25 NM SAL |



| | | | | | |
|--|-------------------------------------|----------|---|----------------------------|------|
| CATEGORIA | * DIRECTO RWY 05 Straight in RWY 05 | | CIRCULANDO NOROESTE Circling Northwest | ALTN Alternate Minimums | |
| | MDA 1000' (539') | | | | |
| A | SSALF | WO SSALF | 1000' (539') | VER PAG GEN 2.19 | |
| B | 1.6 Km | 1.6 Km | | | |
| C | 2.0 Km | 2.4 Km | | | |
| Cruce Zona SC-P50 permitido para ACFT en APCH IFR y en contacto con SCVM TWR. Crossing of Zone SC-P50 permitted to ACFT on IFR APCH and in communications with SCVM TWR | | | | | |
| Veloc. Terrestre Kts | 80 | 100 | 120 | 140 | 160 |
| Angulo DES 3.2° | 453' | 562' | 679' | 793' | 906' |
| MIN:SEC (FAF to MAP) 2.6) | 1:57 | 1:34 | 1:18 | 1:07 | 0:59 |
| * WO L SAL y/o IVDM DME PROC NA Procedure not authorized without SAL L and/or IVDM DME | | | | | |

DASA / SECCION AIS-MAP