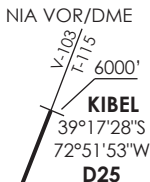
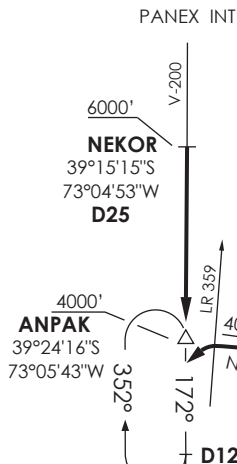


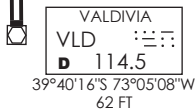
**APP TEMUCO**  
 RDR 119.2  
 SRY 128.7  
**VALDIVIA**  
 TWR 118.3

VAR 6.7 E 2023

**NEKOR 2L**



**KIBEL 1A**



Nivel de Transición por ATC  
 Transition Level by ATC

No se ajusta a escala / Not to scale

**STAR NEKOR 2L / KIBEL 1A**

**NEKOR 2L:** En AWY V-200, cruzando NEKOR (D25 VLD VOR/DME), abandonar 6000 FT e interceptar R351 (TR171°). Cruzar ANPAK INT (D16) 4000FT o superior, luego según autorización ATC.

**NEKOR 2L:** On AWY V-2000, crossing NEKOR (D25 VLD VOR/DME), leave 6000 FT and intercept R351 (TR171°). Cross ANPAK INT (D16) at or above 4000FT, then according to ATC clearance.

**KIBEL 1A:** En AWY V-103 / T-115, cruzando KIBEL (D25 VLD VOR/DME), abandonar 6000 FT en descenso para 4000FT o superior, orbitar D16 para interceptar R351 (TR171°) a 4000FT o superior, luego según autorización ATC.

**KIBEL 1A:** On AWY V-103 / T-115, crossing KIBEL (D25 VLD VOR/DME), leave 6000 FT descending to or above 4000FT, join D16 to intercept R351 (TR171°) at or above 4000FT, then according to ATC clearance.