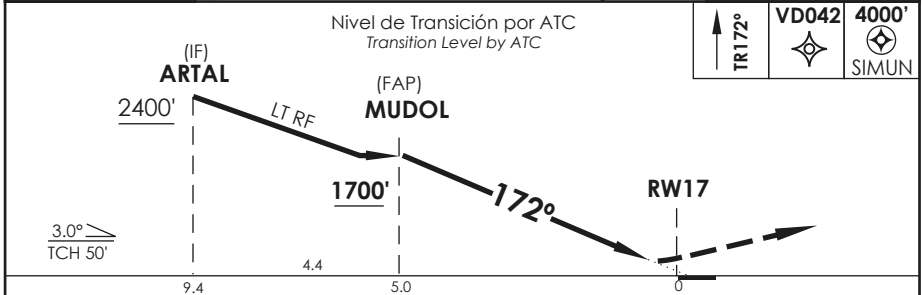
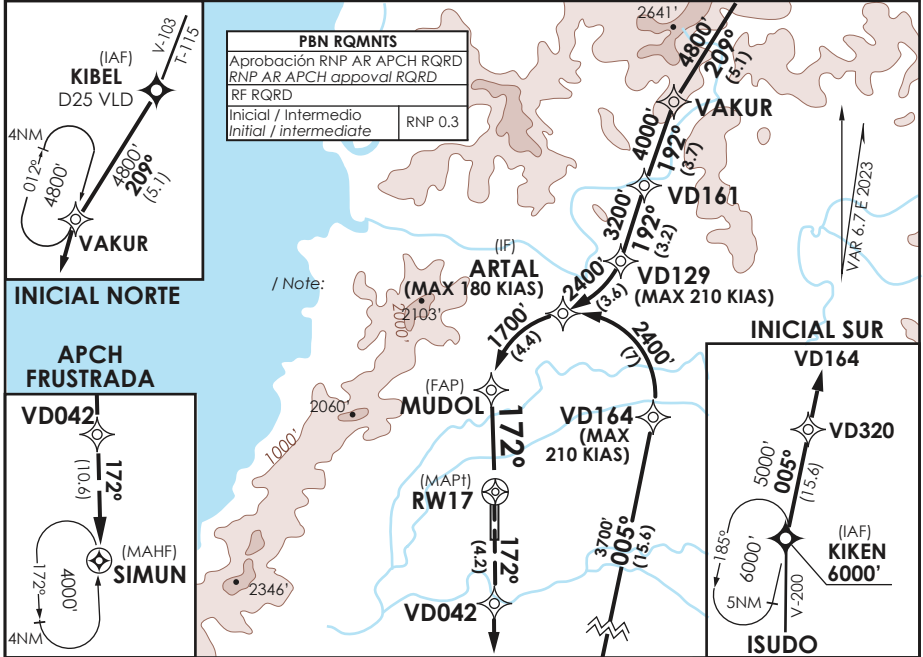


# AD. PICHAY VALDIVIA - CHILE

SCVD IAC 6  
RNP Z Rwy 17 (AR)

APP TEMUCO RADAR APP Temuco RADAR	119.2/128.7	TORRE VALDIVIA Valdivia Tower	118.3	CONTROL TERRESTRE Ground Control	121.8
<b>RNP</b>	FINAL APCH CRS <b>172°</b>	MNM ALT MUDOL <b>1700'</b>	DA (H) <b>380' (321')</b>	AD Elev. THR 17 Elev. <b>59'</b>	5600 FT  MSA 25 NM RW17
APCH FRUSTRADA: Ascenso en TR172° hacia VD042 y posterior SIMUN 4000', ingrese a HLDG 352° izquierda o según ATC CLR. Missed Apch: Climb on TR172° to VD042 and then to SIMUN 4000', enter on HLDG 352° left or according to ATC CLR.					



CATEGORIA	DIRECTO RWY 17 Straight in RWY 17	RNP AR RWY 17 SCVD: PROC NA BLW -5°C ó ABV 50°C.
	RNP 0.3 DA 380' (321')	
A	1.6 Km	MNM ALTN RNP 0.3: VER PAG GEN 2.19 See pag 2.19
B		
C		
D		

Veloc. Terrestre Kts	80	100	120	140	160	RQR AUTORIZACIÓN ESPECIAL PARA ACFT Y CREW SPECIAL ACFT AND AIRCREW AUTHORIZATION RQRD
Angulo DES 3° FPM	425'	531'	637'	743'	849'	
MAPt en DA						

DASA / SECCION AIS-MAP