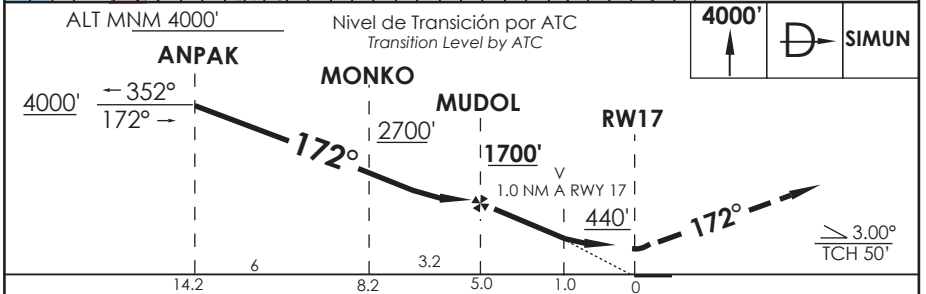
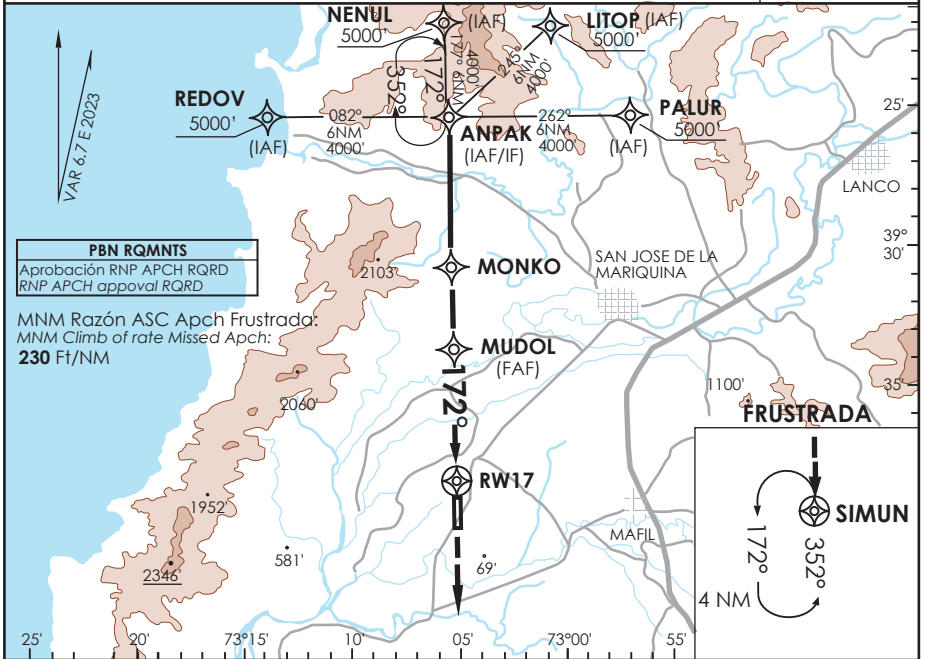


AD. PICHAY VALDIVIA - CHILE

SCVD IAC 4 RNP Y RWY 17 (LNAV only)

APP TEMUCO RADAR APP Temuco RADAR	119.2/128.7	TORRE VALDIVIA Valdivia Tower	118.3	CONTROL TERRESTRE Ground Control	121.8
RNP	FINAL APCH CRS 172°	MNM MUDOL 1700'	MDA 440' (381')	AD Elev THR 17 Elev	59' 59'
APCH FRUSTRADA: Ascenso a 4000' directo SIMUN. Ingreso HLDG 352° izquierda o segun ATC CLR. Missed Apch: Climb to 4000' direct SIMUN. Enter on HLDG 352° left or according to ATC clearance.					5600 FT MSA 25 NM RWY17



CATEGORÍA	DIRECTO RWY 17 Straight in RWY 17	CIRCULANDO Circling	ALTN Alternate Minimums	
	LNAV MDA 440' (381')			
	A	440' (381')	1.6 Km	VER PAG. GEN 2.19
	B	540' (481')	2.4 Km	
C	620' (561')	3.2 Km		
D				

DASA / SECCION AS-MAP