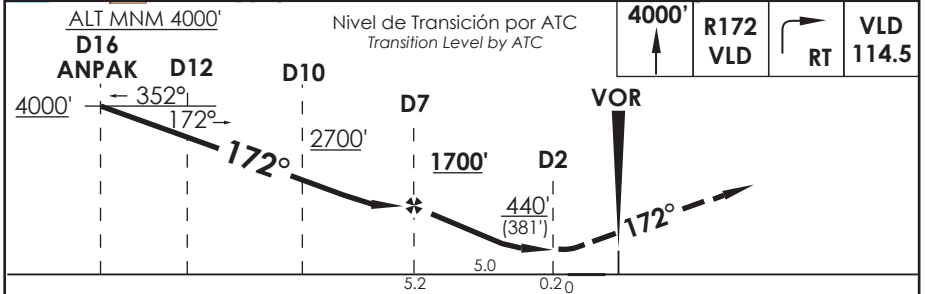
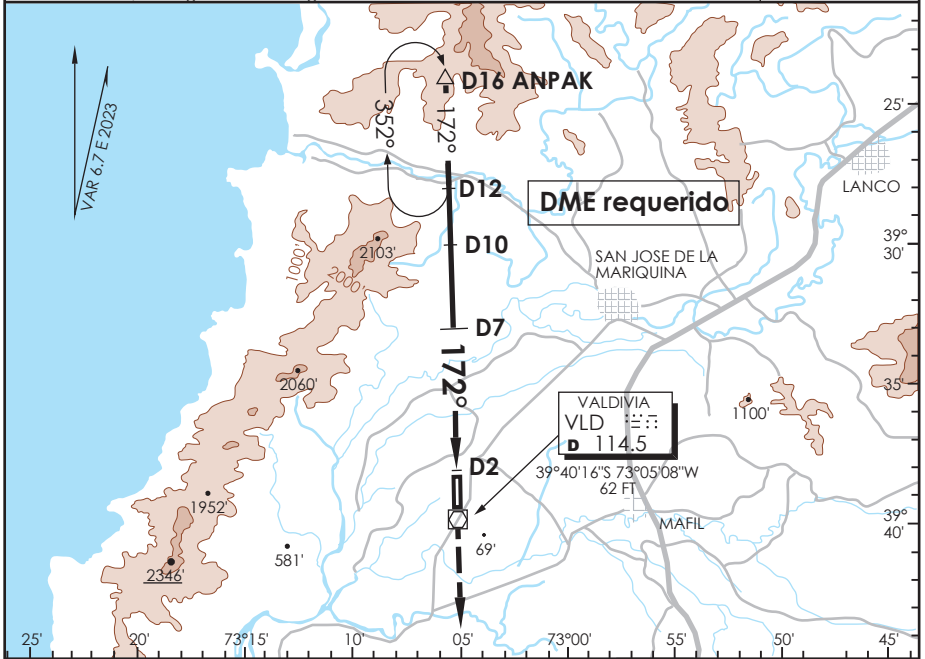


AD. PICHAY VALDIVIA - CHILE

SCVD IAC 2
VOR Rwy 17

| | | | | | |
|---|-------------------------------|--|---------------------------|---|--------------------------|
| APP TEMUCO RADAR APP Temuco RADAR 119.2/128.7 | | TORRE VALDIVIA Valdivia Tower 118.3 | | CONTROL TERRESTRE Ground Control 121.8 | |
| VOR VLD 114.5 | FINAL APCH CRS 172° | MNM ALT D 7 1700' | MDA 440' (381') | AD Elev THR 17 Elev 59' | 5600 FT MSA 25 NM VLD |
| APCH FRUSTRADA: Ascenso a 4000' R172 VLD, regrese derecha VOR VLD. Ingrese HLDG BTN D12 y D16 N, 172° derecha o según ATC CLR. Missed Apch: Climb to 4000' on R172 VLD, right turn direct to VLD VOR. Enter on HLDG between D12 and D16 N, 172° right or according to ATC clearance. | | | | | |



| | | | |
|-----------|--|-------------------------------|-----------------------------------|
| CATEGORIA | DIRECTO RWY 17 <i>Straight in RWY 17</i> | CIRCULANDO <i>Circling</i> | ALTN <i>Alternate Minimums</i> |
| | MDA 440' (381') | | |
| A | 1.6 Km | 440' (381') | VER PAG. GEN 2.19 |
| B | | 540' | |
| C | | (481') | |
| D | 2.0 Km | 620' (561') | 3.2 Km |

| | | | | | |
|------------------------|------|------|------|------|------|
| Veloc. Terrestre Kts | 80 | 100 | 120 | 140 | 160 |
| Angulo DES 2.88° FPM | 404' | 509' | 611' | 713' | 815' |
| Dist.FAF a MAPT 5.0 NM | 3:45 | 3:00 | 2:30 | 2:09 | 1:53 |

DASA / SECCION AS-MAP