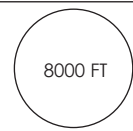
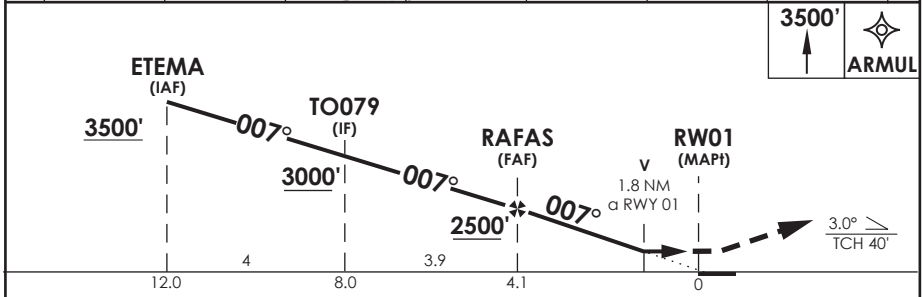
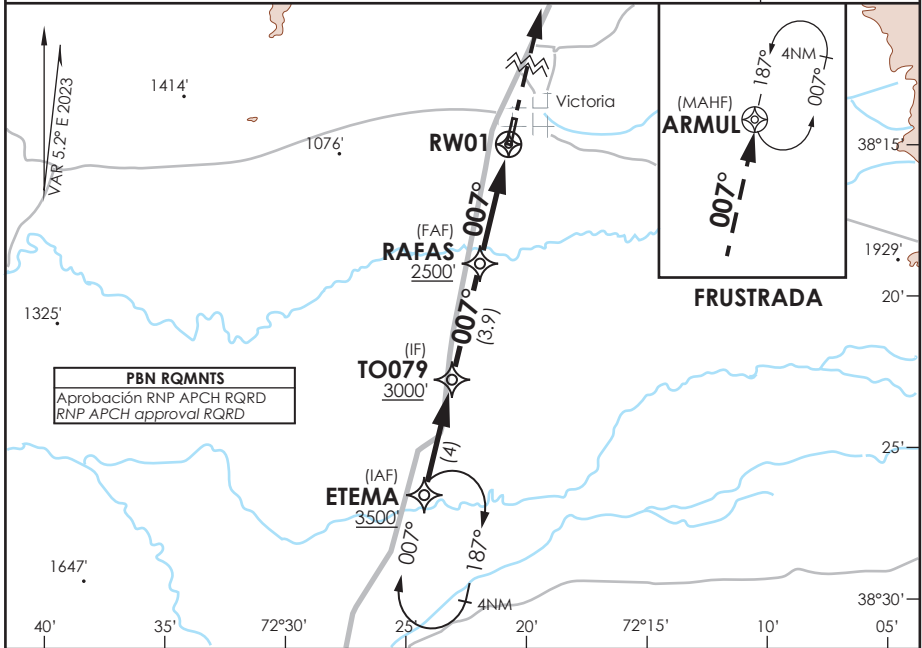


# AD VICTORIA VICTORIA - CHILE

# SCTO IAC 2 RNP Rwy 01 (LNAV only)

TEMUCO RADAR Temuco Radar	119.2 / 128.7	TORRE TEMUCO Temuco TWR	118.4	TIBA TIBA	118.2
<b>RNP</b>	FINAL APCH CRS <b>007°</b>	MNM ALT RAFAS <b>2500'</b>	LNAV MDA (H) <b>1760' (625')</b>	AD Elev. <b>1150'</b> THR 01 Elev. <b>1135'</b>	 MSA 25 NM RW01
APCH FRUSTRADA: Ascenso a 3500' directo a ARMUL. Ingrese en HLDG 187° izquierda. Missed Apch: Climb to 3500' direct to ARMUL. Enter on HLDG, 187° left.					



CATEGORÍA	DIRECTO RWY 01 <i>Straight in RWY 01</i>	CIRCULANDO <i>Circling</i>	ALTN <i>Alternate Minimums</i>
	QNH SCQP TWR <b>LNAV MDA 1760' (625')</b>		
A	2.9 Km	NA	NA
B			

**AD NO CERTIFICADO PARA OPS IFR. VER DAP 11 137 Y NOTAS SOBRE CONDICIONES PARA APROXIMAR**

Usar ajuste altimétrico de Temuco Twr Freq 118.4 MHz.  
Use Temuco TWR altimeter setting freq 118.4 MHz.

Veloc. Terrestre Kts	80	100	120	140	Procedimiento no ejecutable sin QNH <i>Procedure non-executable without QNH</i>
FPM (ángulo DES 3°)	425	531	637	743	