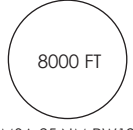
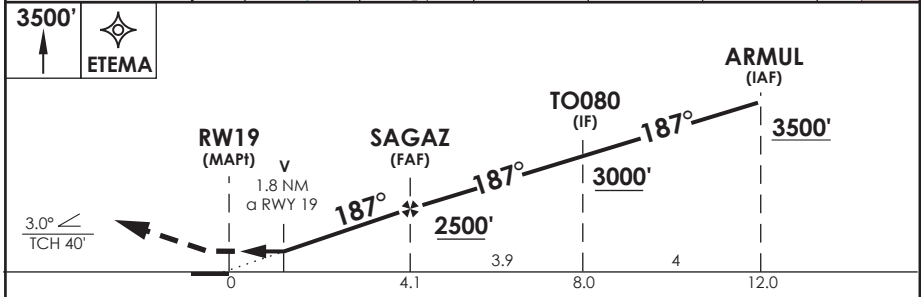
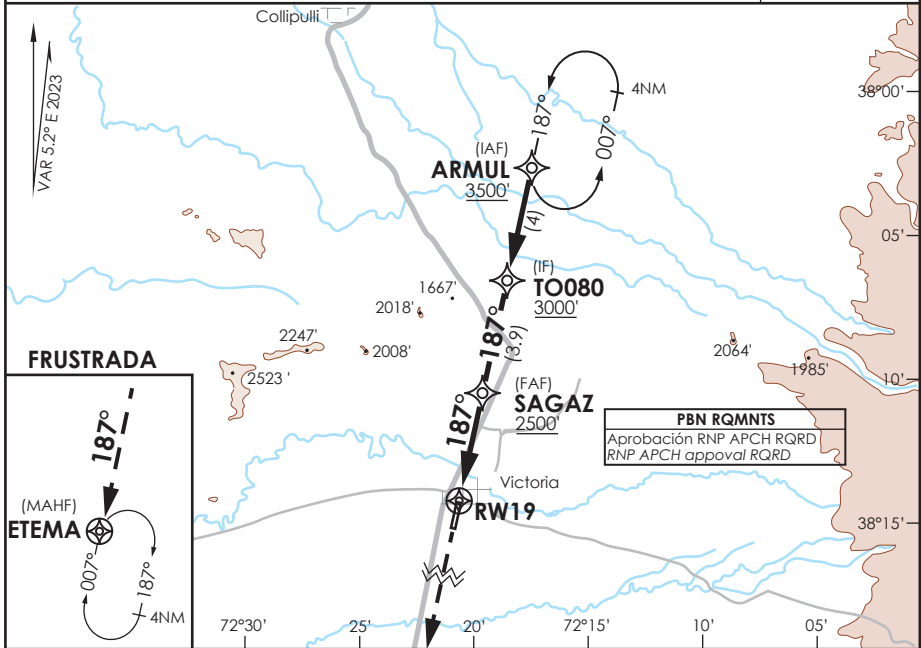


AD VICTORIA VICTORIA - CHILE

SCTO IAC 1 RNP Rwy 19 (LNAV only)

TEMUCO RADAR Temuco Radar	119.2 / 128.7	TORRE TEMUCO Temuco TWR	118.4	TIBA TIBA	118.2
RNP	FINAL APCH CRS 187°	MNM ALT SAGAZ 2500'	LNAV MDA (H) 1760' (612')	AD Elev. 1150'	THR 19 Elev. 1150'
APCH FRUSTRADA: Ascenso a 3500' directo a ETEMA. Ingrese en HLDG 007° derecha. <i>Missed Apch: Climb to 3500' direct to ETEMA. Enter on HLDG, 007° right.</i>					8000 FT 
MSA 25 NM RW19					



A	DIRECTO RWY 19 <i>Straight in RWY 19</i>	CIRCULANDO <i>Circling</i>	ALTN <i>Alternate Minimums</i>
	QNH SCQP TWR LNAV MDA 1760' (612')		
B	2.8 Km	NA	NA

AD NO CERTIFICADO PARA OPS IFR. VER DAP 11 137 Y NOTAS SOBRE CONDICIONES PARA APROXIMAR

Usar ajuste altimétrico de Temuco Twr Freq 118.4 MHz.
Use Temuco TWR altimeter setting freq 118.4 MHz.

Veloc. Terrestre Kts	80	100	120	140	Procedimiento no ejecutable sin QNH <i>Procedure non-executable without QNH</i>
FPM (ángulo DES 3°)	425	531	637	743	

DASA / SECCION AIS-MAP