
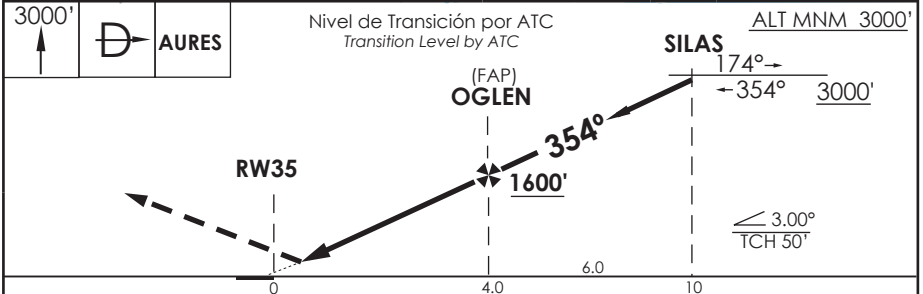
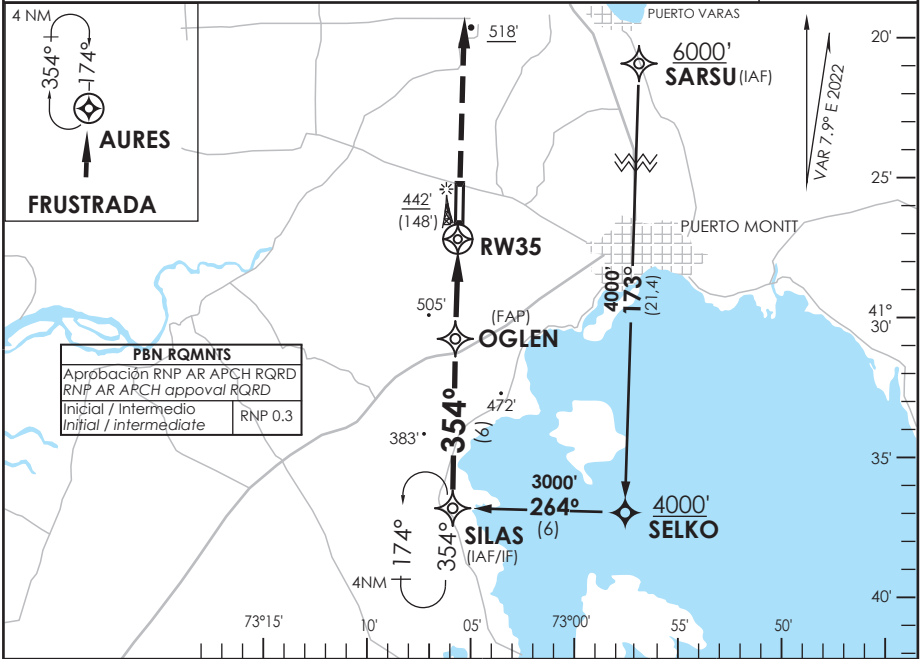


AP. EL TEPUAL PUERTO MONTT - CHILE

SCTE IAC 9
RNP Z Rwy 35 (AR)

| | | | | | | | | |
|--|-------------------------------|-------------------------------|--|--|----------------------|-------------------------------------|--|---|
| APP PUERTO MONTT RADAR Puerto Montt Radar Approach | | 121.3 | TORRE PUERTO MONTT Puerto Montt Tower | | 118.1 | CONTROL TERRESTRE Ground Control | | 121.9 |
| RNP | FINAL APCH CRS 354° | MNM ALT OGLEN 1600' | DA/H ver mínimos DA/H refer to minimums | | AD Elev. 294' | THR 35 Elev. 294' | |  |
| APCH FRUSTRADA: Ascenso 3000' directo AURES, ingrese a HLDG 174° derecho o según autorización ATC. Missed Apch: Climb to 3000' direct to AURES, enter on HLDG 174° right or according to ATC clearance. | | | | | | | | |



| | | | | | | |
|---|-----------------------------------|-----------|---------------------------|-----------|---|------|
| C A T E G O R I A | DIRECTO RWY 35 Straight in RWY 35 | | | | RNP AR RWY 35 SCTE: PROC NA BLW 0°C ó ABV 42°C | |
| | RNP 0.1 DA 580' (286') | | RNP 0.3 DA 670' (376') | | | |
| | ALSF-2 | WO ALSF-2 | ALSF-2 | WO ALSF-2 | MNM ALTN RNP 0.3: VER PAG GEN 2.19 See pag GEN 2.19 | |
| A | | | | | | |
| B | 0.8 Km | 1.4 Km | 1.0 Km | 1.7 Km | | |
| C | | | | | | |
| D | | | | | | |
| Veloc. Terrestre Kts | | 80 | 100 | 120 | 140 | 160 |
| Angulo DES 3.0° | | 425' | 531' | 637' | 743' | 849' |
| MAPt en RW35 | | | | | | |

DASA / SECCION AS-MAP