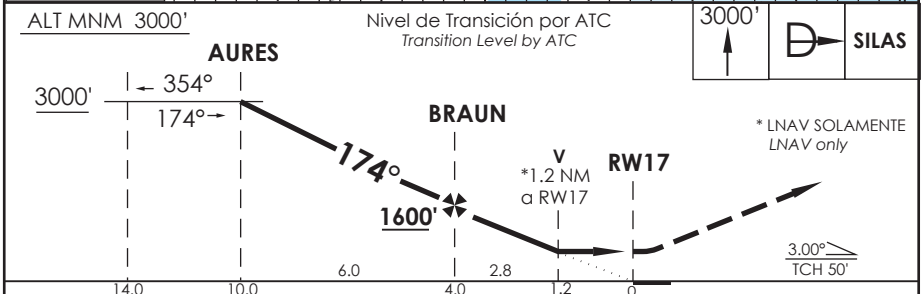
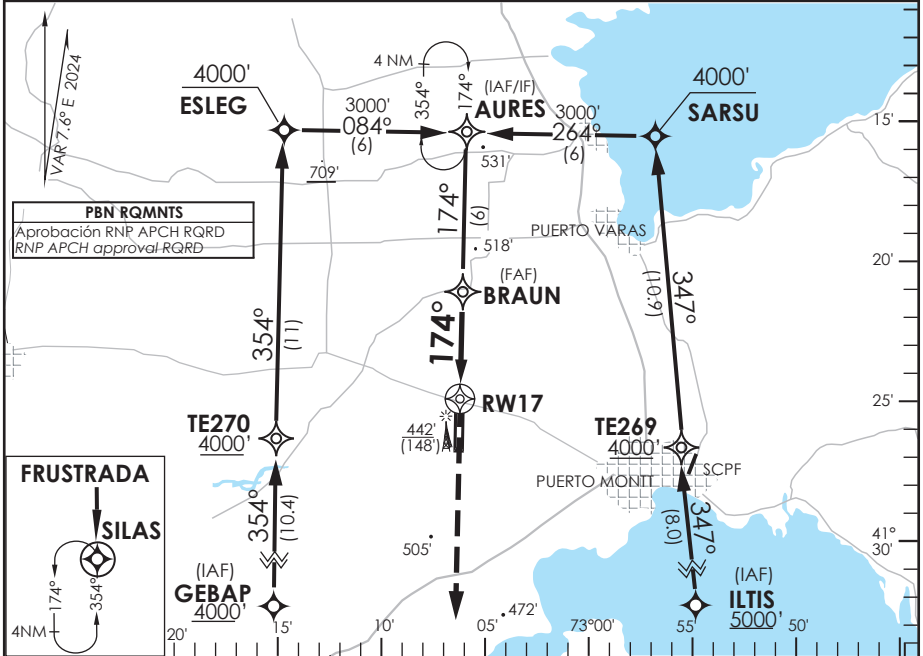


AP. EL TEPUAL PUERTO MONTT - CHILE

SCTE IAC 8
RNP Y Rwy 17

APP PUERTO MONTT RADAR Puerto Montt Radar Approach 119.5/126.6		TORRE PUERTO MONTT Puerto Montt Tower 118.1		CONTROL TERRESTRE Ground Control 121.9	
RNP	FINAL APCH CRS 174°	MNM ALT BRAUN 1600'	LNAV/VNAV DA(H) 550' (286')	AD Elev. 294'	THR 17 Elev. 264'
APCH FRUSTRADA: Ascenso 3000' directo SILAS, ingrese HLDG 354° izquierda o según autorización ATC. Missed Apch: Climb to 3000' direct to SILAS, enter on HLDG 354° left or according to ATC clearance.					8600 FT MSA 25 NM RW17



C A T E G O R Í A	DIRECTO RWY 17 Straight in RWY 17		CIRCULANDO Circling	ALTN Alternate Minimums	
	LNAV/VNAV DA 550'(286')	LNAV MDA 720'(456')			
	A	1.6 Km	820' (526')	1.6 Km	VER PAG. GEN 2.19 SEE PAGE GEN 2.19
	B			2.4 Km	
C	3.2 Km				
D	2.1 Km	960' (666)			

Para sistemas Baro VNAV no compensados
PROC BARO-VNAV NA BLW -10°C ó ABV 39°C

Veloc. Terrestre Kts	80	100	120	140	160
Angulo DES 3,0°	425'	531'	637'	743'	849'
MAPt en RW17					

DASA / SECCION AS-MAP