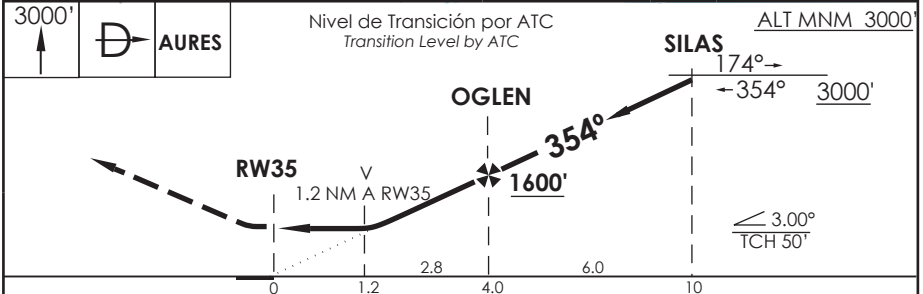
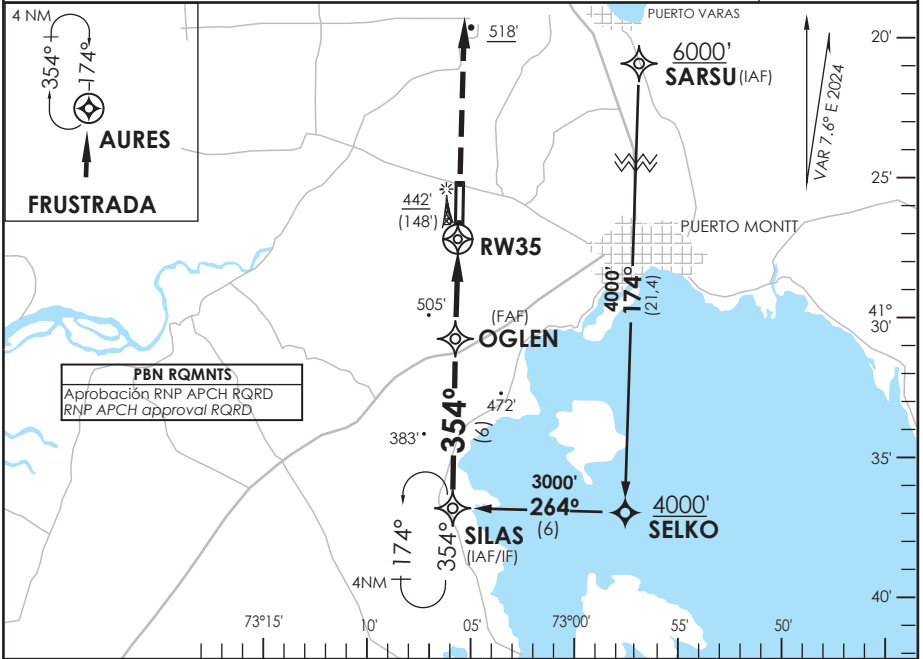


AP. EL TEPUAL PUERTO MONTT - CHILE

SCTE IAC 7
RNP Y Rwy 35

| | | | | | |
|--|-------------------------------|--|---------------------------------------|---|---------------------------|
| APP PUERTO MONTT RADAR Puerto Montt Radar Approach 119.5/126.6 | | TORRE PUERTO MONTT Puerto Montt Tower 118.1 | | CONTROL TERRESTRE Ground Control 121.9 | |
| RNP | FINAL APCH CRS 354° | MNM ALT OGLEN 1600' | LNAV/VNAV DA(H) 720' (426') | AD Elev. 294' | 8600 FT MSA 25 NM RW35 |
| APCH FRUSTRADA: Ascenso 3000' directo AURES, ingrese a HLDG 174° derecho o según autorización ATC. Missed Apch: Climb to 3000' direct to AURES, enter on HLDG 174° right or according to ATC clearance. | | | | | |



| CATEGORÍA | DIRECTO RWY 35 Straight in RWY 35 | | | | CIRCULANDO Circling | ALTN Alternate Minimums |
|-----------|-----------------------------------|-----------|----------------------|-----------|------------------------|----------------------------|
| | LNAV/VNAV DA 720' (426') | | LNAV MDA 720' (426') | | | |
| | ALSF-2 | WO ALSF-2 | ALSF-2 | WO ALSF-2 | | |
| A | 1.2 Km | 1.6 Km | 1.2 Km | 1.6 Km | 820' (526') | VER PAG. GEN 2.19 |
| B | | | | | | |
| C | 1.3 Km | 2.0 Km | 1.3 Km | 2.0 Km | 960' (666') | SEE PAGE GEN 2.19 |
| D | | | | | | |

Para sistemas Baro VNAV no compensados PROC
BARO-VNAV NA BLW -10°C ó ABV 39°C

| | | | | | |
|----------------------|------|------|------|------|------|
| Veloc. Terrestre Kts | 80 | 100 | 120 | 140 | 160 |
| Angulo DES 3.0° | 425' | 531' | 637' | 743' | 849' |
| MAPt en RW35 | | | | | |

DASA / SECCION AS-MAP