
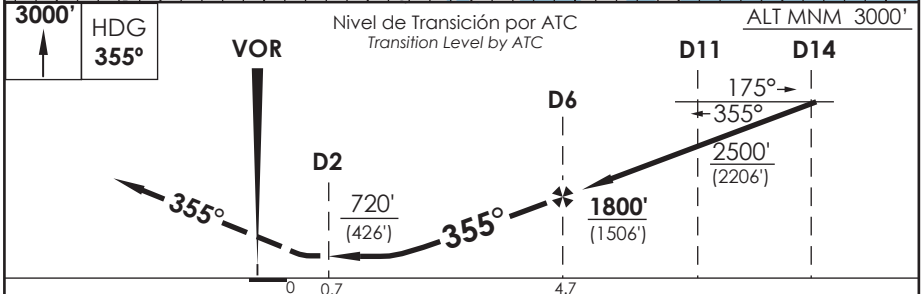
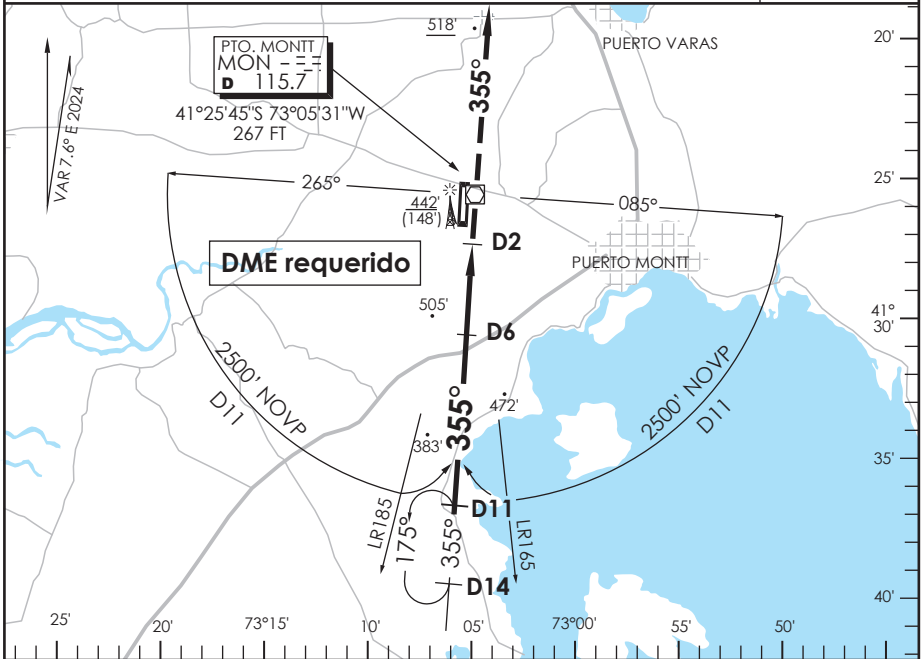


# AP. EL TEPUAL PUERTO MONTT- CHILE

SCTE IAC 4  
VOR Z Rwy 35

APP PUERTO MONTT RADAR Puerto Montt Radar Approach 119.5/126.6		TORRE PUERTO MONTT Puerto Montt Tower 118.1		CONTROL TERRESTRE Ground Control 121.9	
VOR MON <b>115.7</b>	FINAL APCH CRS <b>355°</b>	MNM ALT D6 <b>1800'</b> (1506')	MDA <b>720'</b> (426')	AD Elev. THR 35 Elev. <b>294'</b>	
APCH FRUSTRADA: Ascenso 3000' HDG 355°, luego según autorización ATC.					
Missed Apch: Climb to 3000' on HDG 355°, then according to ATC clearance.					MSA 25 NM MON



C A T E G O R Í A	DIRECTO RWY 35 Straight in RWY 35		CIRCULANDO Circling	ALTN Alternate Minimums
	MDA <b>720'</b> (426')			
		ALSF-2	WO ALSF-2	
A	1.2 Km	1.6 Km	820'	VER PAG. GEN 2.19 SEE PAGE GEN 2.19
B			1.6 Km	
C	1.6 Km	2.0 Km	960'	
D			3.2 Km	

Veloc. Terrestre Kts	80	100	120	140	160
Angulo DES 2.92° PFM	413'	517'	620'	723'	827'
FAF to MAPt 4.0 NM	3:00	2:24	2:00	1:43	1:30

DASA / SECCION AS-MAP