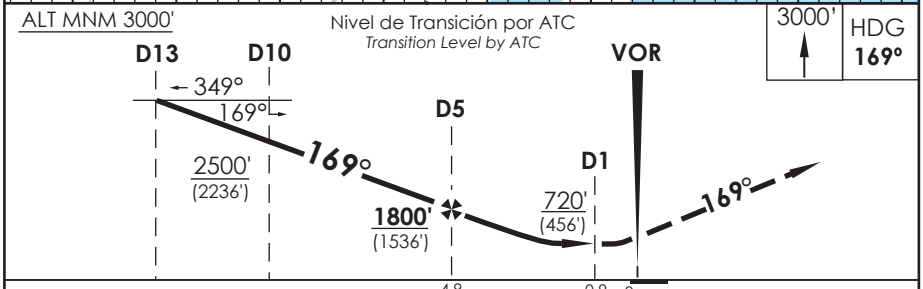
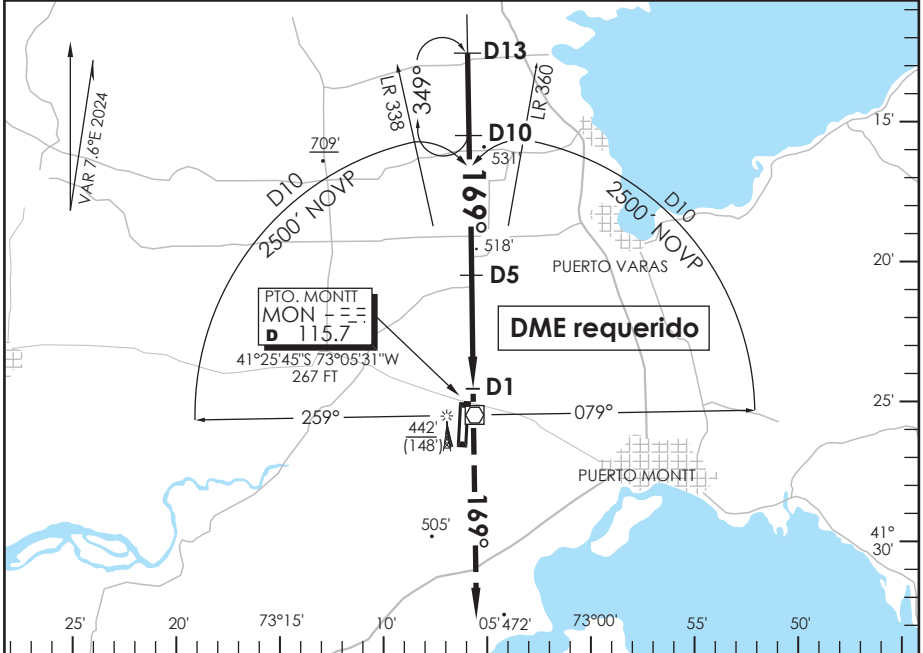


AP. EL TEPUAL PUERTO MONTT - CHILE

SCTE IAC 3
VOR Z Rwy 17

APP PUERTO MONTT RADAR Puerto Montt Radar Approach 119.5/126.6		TORRE PUERTO MONTT Puerto Montt Tower 118.1		CONTROL TERRESTRE Ground Control 121.9	
VOR MON 115.7	FINAL APCH CRS 169°	MNM ALT D5 1800' (1536')	MDA 720' (456')	AD Elev. 294'	THR 17 Elev. 264'
APCH FRUSTRADA: Ascenso 3000' HDG 169°, luego según autorización ATC.					8600 FT MSA 25 NM MON
Missed Apch: Climb to 3000' on HDG 169°, then according to ATC clearance.					



C A T E G O R I A	DIRECTO RWY 17 <i>Straight in RWY 17</i>		CIRCULANDO <i>Circling</i>	ALTN <i>Alternate Minimums</i>	
	MDA 720' (456')				
	A	1.6 Km	820' (526')	1.6 Km	VER PAG. GEN 2.19 SEE PAGE GEN 2.19
	B				
C	2.4 Km		960' (666')	3.2 Km	
D					

Veloc. Terrestre Kts	80	100	120	140	160
Angulo DES 2.86° PFM	405'	506'	607'	708'	810'
FAF to MAPt 4.0 NM	3:00	2:24	2:00	1:43	1:30

DASA / SECCION AS-MAP