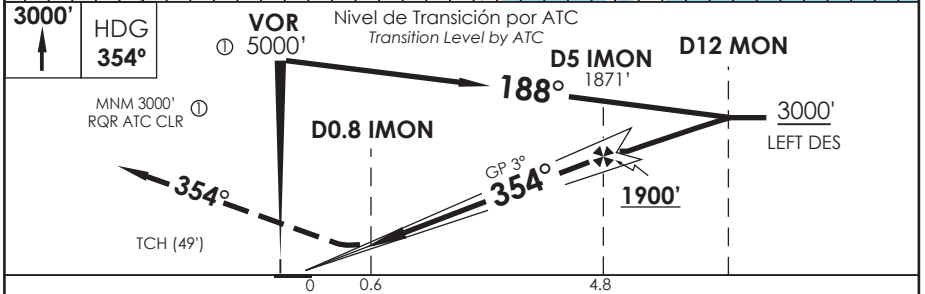
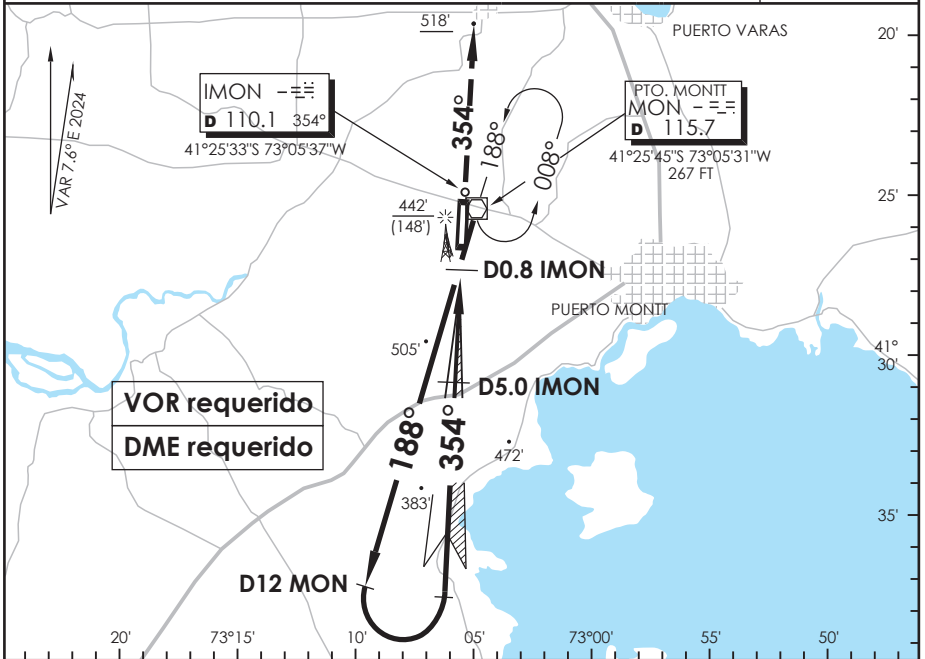


AP. EL TEPUAL
PUERTO MONTT - CHILE

SCTE IAC 2
ILS Y o LOC Y Rwy 35

APP PUERTO MONTT RADAR Puerto Montt Radar Approach 119.5/126.6		TORRE PUERTO MONTT Puerto Montt Tower 118.1		CONTROL TERRESTRE Ground Control 121.9	
LOC IMON 110.1	FINAL APCH CRS 354°	MNM ALT D5 IMON 1900'	DA(H) 494'(200')	AD Elev. THR 35 Elev. 294'	8600 FT MSA 25 NM MON

APCH FRUSTRADA: Ascenso 3000' HDG 354°, luego según autorización ATC.
 Missed Apch: Climb to 3000' on HDG 354°, then according to ATC clearance.



CATEGORÍA	** DIRECTO RWY 35 Straight in RWY 35				CIRCULANDO Circling	ALTN Alternate Minimums
	ILS DA 494' (200')		LOC MDA 760' (466')			
	ALSF-2	WO ALSF-2	ALSF-2	WO ALSF-2		
A	RVR 550m*	1.2 Km	0.8 Km	1.6 Km	820' (526')	VER PAG. GEN 2.19 SEE PAGE GEN 2.19
B	RVR 750m		1.6 Km	2.4 Km	960' (666')	
C	0.8 Km					
D						
* Ver pagina GEN 2.11 See page GEN 2.11			** WO IMON DME PROC NA Procedure not authorized without IMON DME			
Veloc. Terrestre Kts	80	100	120	140	160	
GP 3.0° FPM	425'	531'	637'	743'	849'	
Dist.FAF a MAPT 4.2 NM	3:09	2:31	2:06	1:48	1:35	

DASA / SECCION AS-MAP