
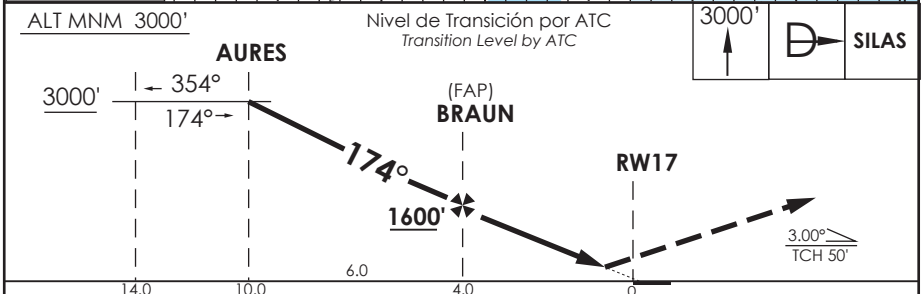
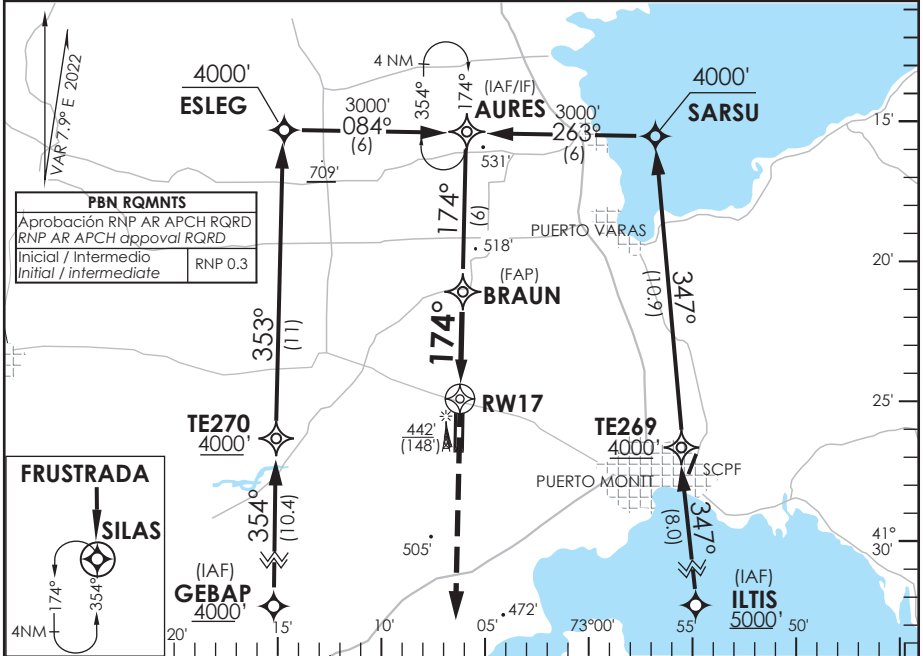


# AP. EL TEPUAL PUERTO MONTT - CHILE

SCTE IAC 10  
RNP Z Rwy 17 (AR)

APP PUERTO MONTT RADAR Puerto Montt Radar Approach	121.3	TORRE PUERTO MONTT Puerto Montt Tower	118.1	CONTROL TERRESTRE Ground Control	121.9
<b>RNP</b>	FINAL APCH CRS <b>174°</b>	MNM ALT BRAUN <b>1600'</b>	DA/H ver mínimos DA/H refer to minimums	AD Elev. THR 17 Elev. <b>294'</b>	
APCH FRUSTRADA: Ascenso 3000' directo SILAS, ingrese HLDG 354° izquierda o según autorización ATC. Missed Apch: Climb to 3000' direct to SILAS, enter on HLDG 354° left or according to ATC clearance.					



CATEGORÍA	DIRECTO RWY 17 Straight in RWY 17		RNP AR RWY 17 SCTE: PROC NA BLW 0°C ó ABV 42°C			
	RNP 0.15 DA 520' (256')	RNP 0.3 DA 590' (326')				
A	1.3 Km		MNM ALTN RNP 0.3: VER PAG GEN 2.19 See pag GEN 2.19			
B						
C						
D						
Veloc. Terrestre Kts		80	100	120	140	160
Angulo DES 3,0°		425'	531'	637'	743'	849'
MAPt en RW17						

DASA / SECCION AS-MAP