

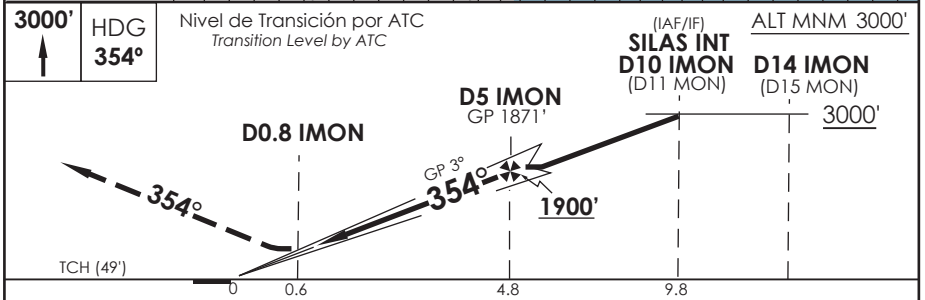
AP. EL TEPUAL PUERTO MONTT - CHILE

SCTE IAC 1
ILS Z o LOC Z Rwy 35

APP PUERTO MONTT RADAR Puerto Montt Radar Approach		119.5/126.6	TORRE PUERTO MONTT Puerto Montt Tower		118.1	CONTROL TERRESTRE Ground Control		121.9
LOC IMON	FINAL APCH CRS	MNM ALT D5 IMON	DA(H)	AD Elev.	294'	THR 35 Elev. 294'		
110.1	354°	1900'	494'(200')					

APCH FRUSTRADA: Ascenso 3000' HDG 354°, luego según autorización ATC.
Missed Apch: Climb to 3000' on HDG 354°, then according to ATC clearance.

8600 FT
MSA 25 NM MON



CATEGORÍA	** DIRECTO RWY 35 Straight in RWY 35				CIRCULANDO Circling	ALTN Alternate Minimums
	ILS DA 494' (200')		LOC MDA 760' (466')			
	ALSF-2	WO ALSF-2	ALSF-2	WO ALSF-2		
A	RVR 550m*	1.2 Km	0.8 Km	1.6 Km	820' (526')	1.6 Km
B	RVR 750m					
C	0 Km					
D	0.8 Km					
* Ver página GEN 2.11 See page GEN 2.11		** WO IMON DME PROC NA Procedure not authorized without IMON DME				
Veloc. Terrestre Kts	80	100	120	140	160	
GP 3.0° FPM	425'	531'	637'	743'	849'	
Disf. FAF a MAPT 4.2 NM	3:09	2:31	2:06	1:48	1:35	

CAMBIO: FREQ RDR / TR / VAR
Change: RDR FREQ / TR / VAR

DGAC AMDT 98

28 NOVIEMBRE 2024

DASA / SECCION AS-MAP