

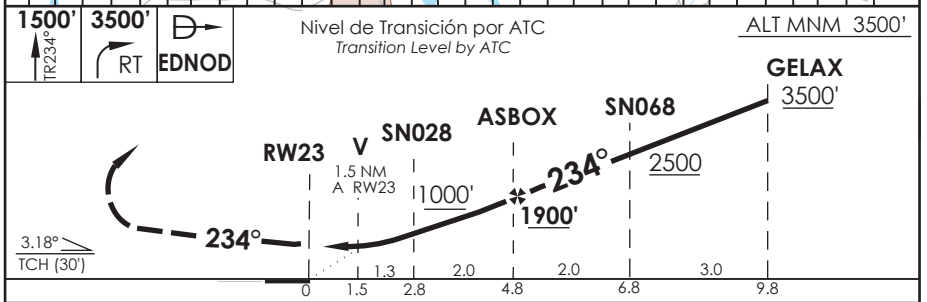
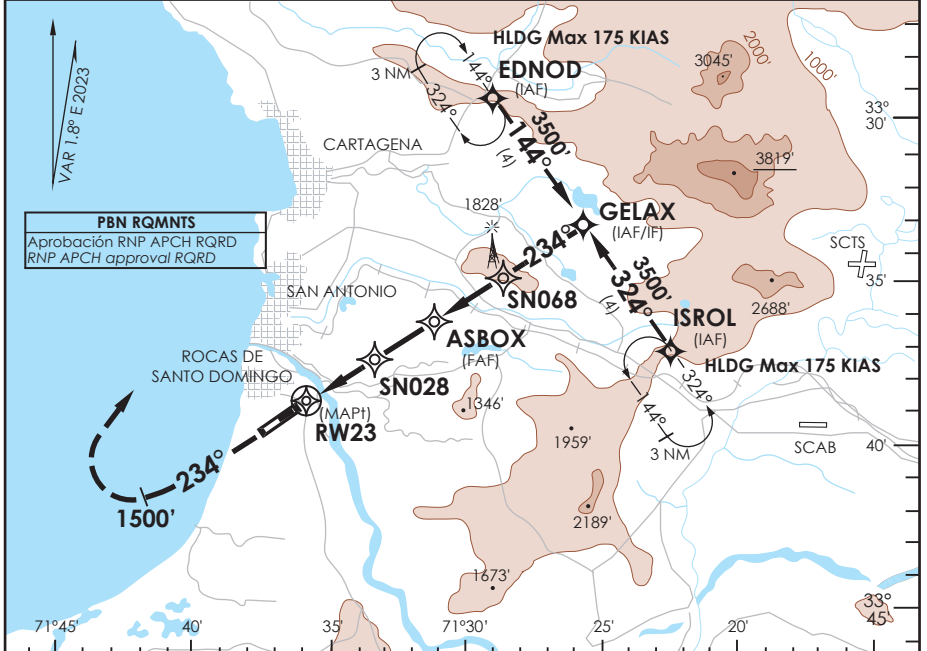
**SANTO DOMINGO**  
**SANTO DOMINGO - CHILE**

SCSN IAC 6  
**RNP Rwy 23 (LNAV only)**

TORRE SANTO DOMINGO Santo Domingo Tower		134.6	CONTROL TERRESTRE Ground Control		121.9	<div style="border: 1px solid black; border-radius: 50%; width: 60px; height: 60px; display: flex; align-items: center; justify-content: center;"> <span>5600 FT</span> </div>
<b>RNP</b>	FINAL APCH CRS	<b>234°</b>	MNM ALT ASBOX	<b>1900'</b>	LNAV MDA(H)	
					AD Elev	<b>246'</b>
					THR 23 Elev	<b>246'</b>

APCH FRUSTRADA: Ascenso en TR234 hasta 1500' o superior, viraje derecha en ascenso a 3500' directo a EDNOD, ingresar a HLDG 144° RT o mantener VFR o según instrucciones ATC.  
 Missed Apch: Climb on TR234 till 1500' or above, right turn climbing to 3500' direct to EDNOD, enter on HLDG 144° right or maintain VFR or according to ATC instructions.

MSA 25 NM RW23



C D E F G H I J K L M N O P Q R S T U V W X Y Z	DIRECTO RWY 23 <i>Straight in RWY 23</i>	CIRCULANDO <i>Circling</i>	ALTN <i>Alternate Minimums</i>
	LNAV MDA <b>780'(534')</b>		
A	2.4 Km	800'(554')	N A
B		880'(634')	

**VUELOS DE INSTRUCCIÓN: REQUIEREN CEIL 1150 FT**  
 Training Flights: **CEIL 1150 FT REQUIRED**

**AD NO CERTIFICADO OPS IFR. PROCEDIMIENTO RNP A PISTA DE VUELO VISUAL CON CEIL NO INFERIOR A MDH**

Veloc. Terrestre Kts	80	100	120	140
Angulo DES 3.18° FPM	450'	563'	675'	788'
MAPT en RW23				