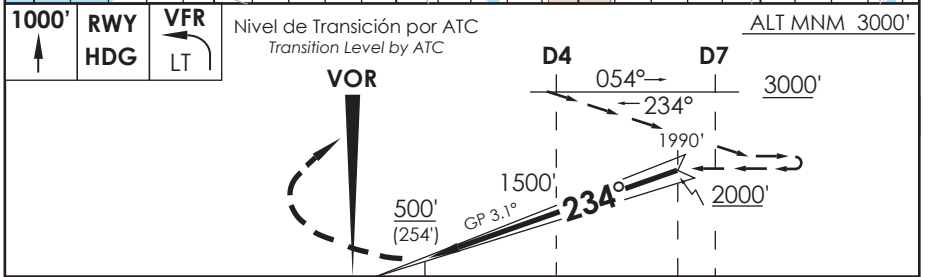
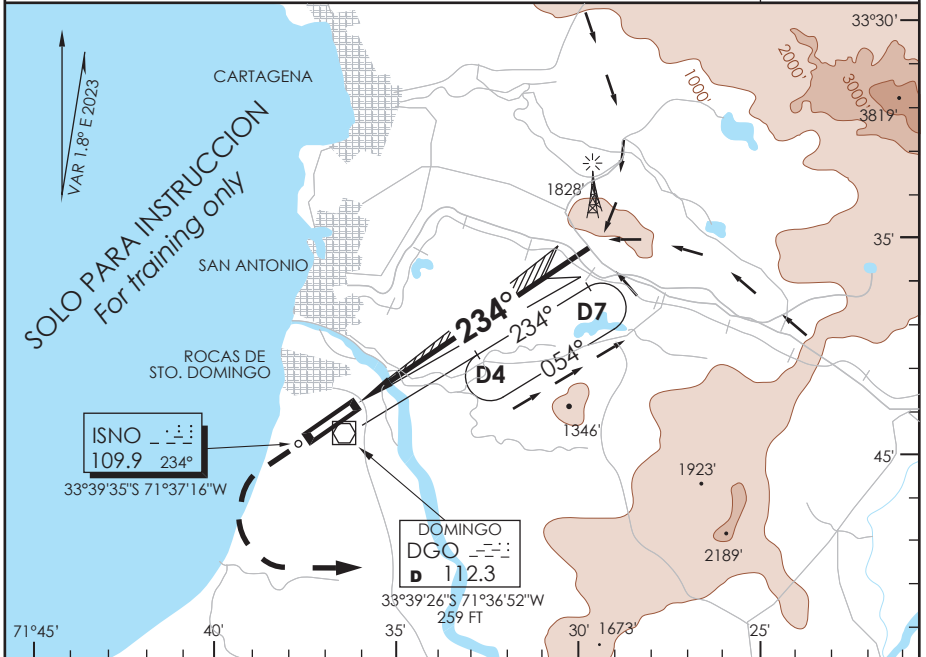


SANTO DOMINGO  
**SANTO DOMINGO - CHILE**

SCSN IAC 4  
**ILS Rwy 23**

TORRE SANTO DOMINGO Santo Domingo Tower		134.6	CONTROL TERRESTRE Ground Control		121.9
LOC ISNO <b>109.9</b>	FINAL APCH CRS <b>234°</b>	--	DA(H) <b>500'(254')</b>	AD Elev THR 23 Elev	<b>246'</b> <b>246'</b>
APCH FRUSTRADA: Ascender en rumbo eje de pista hasta 1000', viraje izquierda en ascenso manteniendo VFR o según instrucciones ATC. Missed Apch: Climb on runway heading until 1000' then left turn climbing and maintaining VFR or according ATC instructions.					5600 FT
					MSA 25 NM DGO



C A T E G O R Í A	DIRECTO RWY 23 <i>Straight in RWY 23</i>	- Solo para instrucción - No permite OPS en IMC (HLDG/APCH) - HLDG VOR/DME optativo
	DA <b>500' (254')</b>	- Cerros altos 8 NM al ENE y E
A	2.4 Km LIBRE DE NUBES A LA VISTA DE TIERRA / AGUA	- Instalación no standard
B	<i>Free of clouds / In sight of land or water</i>	- RWY 800 x 18 m ASPH - Resistencia 5700 Kg AUW/1

*For training only / IMC OPS (HLDG or APCH) not permitted / VOR/DME holding is optional / High hills 8 NM at ENE and E. Non standard system RWY 800 x 18 m asphalt RWY Strength 5700 Kg AUW/1*

Veloc. Terrestre Kts	80	100	120	140
GP 3.1° FPM	439	548	658	768

CAMBIO: FREQ  
 Change: FREQ

DGAC AMDT 96

16 MAYO 2024

DASA / SECCION IAS-MAP