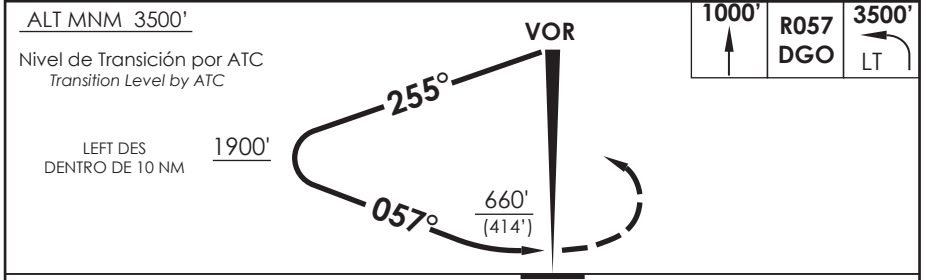
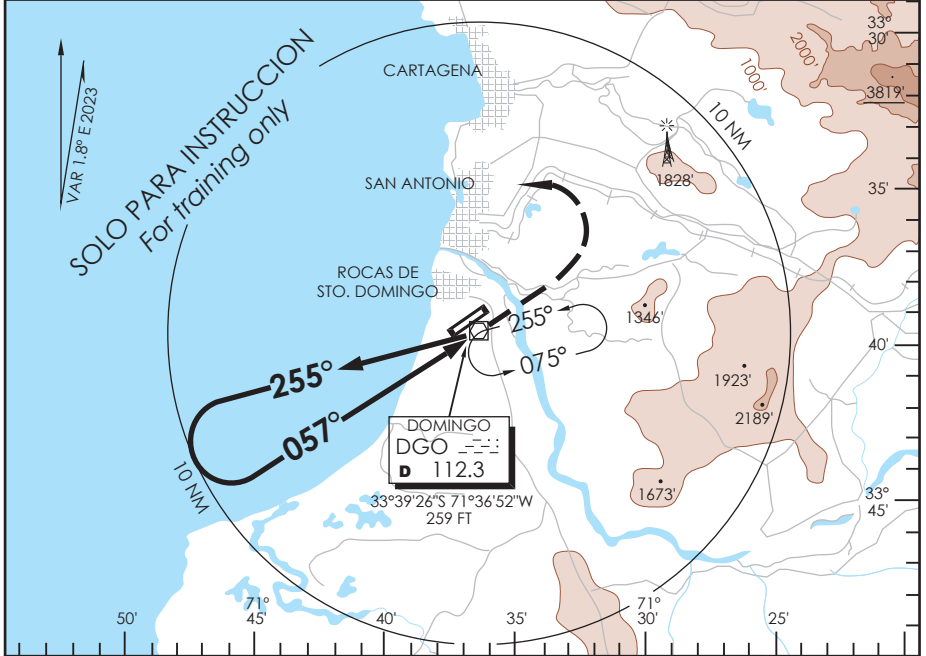


SANTO DOMINGO SANTO DOMINGO - CHILE

SCSN IAC 3
VOR Y Rwy 05

TORRE SANTO DOMINGO Santo Domingo Tower 134.6		CONTROL TERRESTRE Ground Control 121.9	
VOR DGO 112.3	FINAL APCH CRS 057°	WO FAF	MDA(H) 660'(414')
AD Elev 246' THR 05 Elev 234'			5600 FT MSA 25 NM DGO
APCH FRUSTRADA: Ascenso via R057 DGO hasta 1000', viraje izquierda continuar ascenso a 3500', ingrese HLDG 255° izquierda o mantener VFR o según instrucciones ATC. Missed Apch: Climb on R057 DGO VOR until 1000', left turn continue climbing to 3500' enter on HLDG 255° left or maintain VFR or according ATC instructions.			



C A T A	DIRECTO RWY 05 <i>Straight in RWY 05</i>	CIRCULANDO <i>Circling</i>	ALTN <i>Alternate Minimums</i>	
	MDA 660' (414') CEIL 1150 Ft			
A	2.4 Km	800'(554') CEIL 1150'	2.4 Km	NA
B		880'(634') CEIL 1150'		

CAMBIO: FREQ
Change: FREQ

DGAC AMDT 96

16 MAYO 2024

DASA / SECCION A3-MAP