
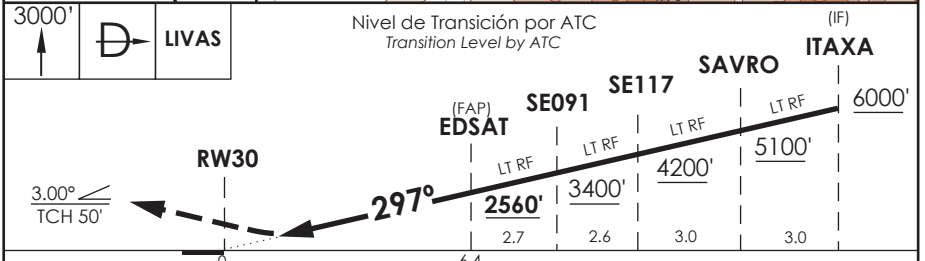
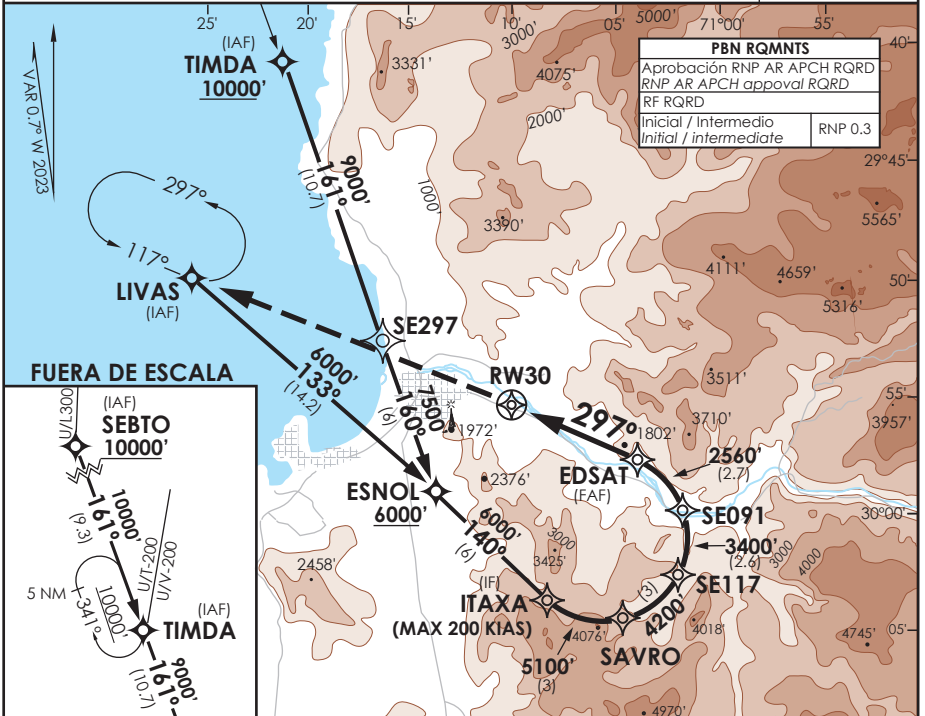


AD. LA FLORIDA
LA SERENA - CHILE

SCSE IAC 5
RNP Y Rwy 30 (AR)

RDR LA SERENA La Serena Radar	135.35	TORRE LA SERENA La Serena Tower	129.4	CONTROL TERRESTRE Ground Control	121.9
RNP	FINAL APCH CRS 297°	MNM ALT EDSAT 2560'	DA/H ver mínimos DA/H refer to minimums	AD Elev. 481' THR30 Elev. 481'	 MSA 25 NM RW30
APCH FRUSTRADA: Ascenso 3000' directo a LIVAS, luego según autorización ATC. Missed Apch: Climb to 3000' direct to LIVAS, then according to ATC clearance.					



DIRECTO RWY 30 Straight in RWY 30 RNP 0.15 DA 731' (250') 1.6 Km DA 745' (264') 1.6 Km	RNP 0.30 DA 900' (419') 1.6 Km 2.0 Km DA 1172' (691') 3.2 Km	RNP AR RWY 30 SCSE: PROC NA BLW 6.8°C ó ABV 48°C.
		MNM ALTN RNP 0.3: VER PAG GEN 2.19 See pag 2.19
		Veloc. Terrestre Kts Angulo DES 3.0° FPM MAPt en DA
		RQR AUTORIZACIÓN ESPECIAL PARA ACFT Y CREW SPECIAL ACFT AND AIRCREW AUTHORIZATION RQRD