
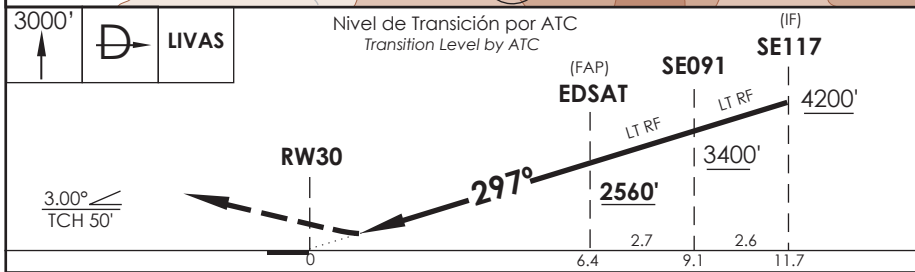
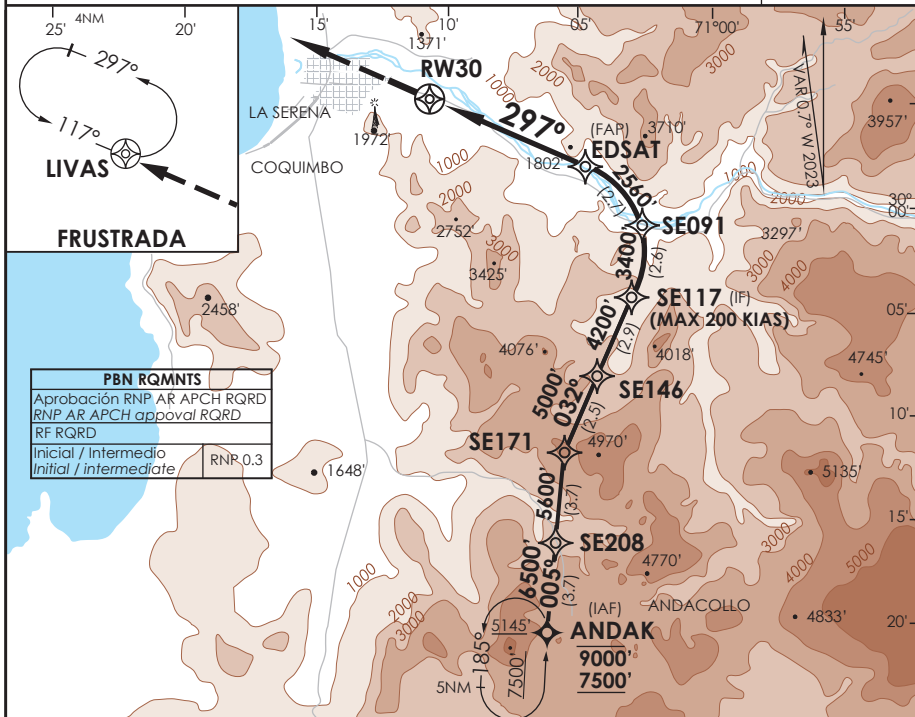


# AD. LA FLORIDA LA SERENA - CHILE

## SCSE IAC 4 RNP Z Rwy 30 (AR)

RDR LA SERENA La Serena Radar	135.35	TORRE LA SERENA La Serena Tower	129.4	CONTROL TERRESTRE Ground Control	121.9
<b>RNP</b>	FINAL APCH CRS <b>297°</b>	MNM ALT EDSAT <b>2560'</b>	DA/H ver mínimos DA/H refer to minimums	AD Elev. <b>481'</b> THR30 Elev. <b>481'</b>	 MSA 25 NM RW30
<b>APCH FRUSTRADA:</b> Ascenso 3000' directo a LIVAS, luego según autorización ATC.					
<i>Missed Apch: Climb to 3000' direct to LIVAS, then according to ATC clearance.</i>					



CATEGORIA	DIRECTO RWY 30 <i>Straight in RWY 30</i>				<b>RNP AR RWY 30 SCSE:</b> PROC NA BLW 6.8°C ó ABV 48°C.
	RNP 0.15 DA <b>731'</b> (250')	RNP 0.30 DA <b>900'</b> (419')			
	A	1.6 Km		1.6 Km	<b>MNM ALTN RNP 0.3:</b> <b>VER PAG GEN 2.19</b> <i>See pag 2.19</i>
	B	1.6 Km		2.0 Km	
C	1.6 Km		3.2 Km		
D	DA <b>745'</b> (264')	DA <b>1172'</b> (691')			

Veloc. Terrestre Kts	80	100	120	140	160	<b>RQR AUTORIZACIÓN ESPECIAL PARA ACFT Y CREW</b> <b>SPECIAL ACFT AND AIRCREW AUTHORIZATION RQRD</b>
Angulo DES 3.0° FPM	425'	531'	637'	743'	849'	
MAPt en DA						

CAMBIO: TR HLDG  
Change: TR HLDG

DGAC AMDT 95

30 NOVIEMBRE 2023

DASA /SECCION AS-MAP