

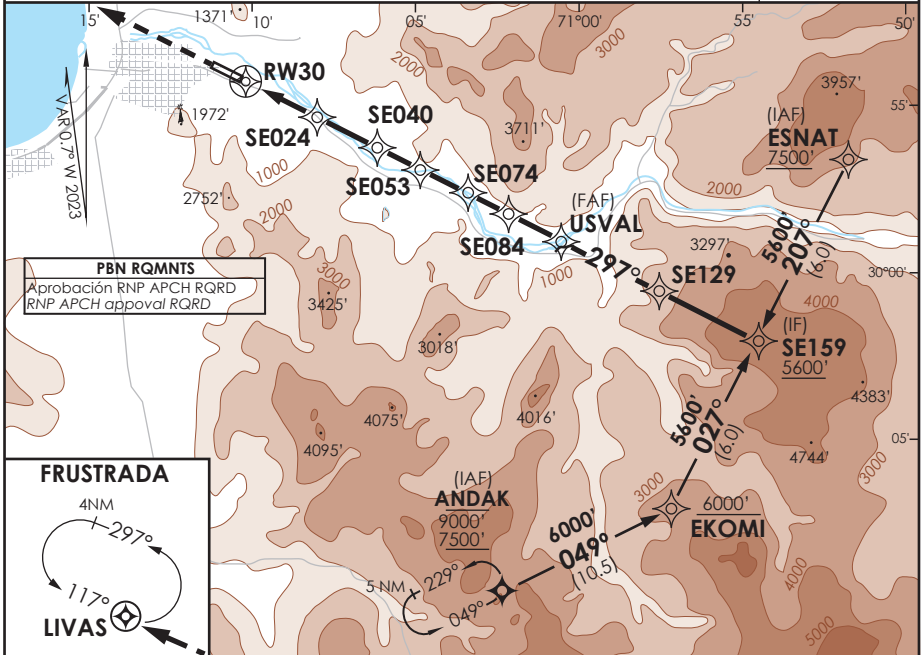
AD. LA FLORIDA
LA SERENA - CHILE

SCSE IAC 3
RNP X Rwy 30 (LNAV only)

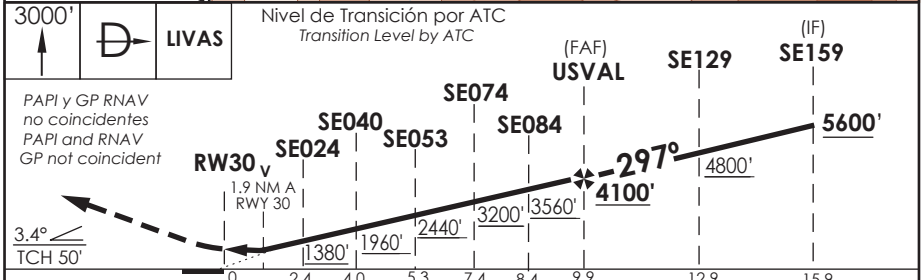
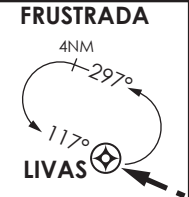
RDR LA SERENA La Serena Radar	135.35	TORRE LA SERENA La Serena Tower	129.4	CONTROL TERRESTRE Ground Control	121.9
RNP	FINAL APCH CRS 297°	MNM ALT USVAL 4100'	LNAV MDA (H) 1200' (719')	AD Elev. THR30 Elev. 481'	9500 FT

APCH FRUSTRADA: Ascenso 3000' directo a LIVAS, luego según autorización ATC.
 Missed Apch: Climb to 3000' direct to LIVAS, then according to ATC clearance.

MSA 25 NM RW30



PBN RQMNTS
 Aprobación RNP APCH RQRD
 RNP APCH approval RQRD



PAPI y GP RNAV no coincidentes
 PAPI and RNAV GP not coincident

C A T E G O R Í A	DIRECTO RWY 30 Straight in RWY 30	CIRCULANDO Circling	ALTN Alternate Minimums
	LNAV MDA 1200' (719')		
	A	N A	VER PAG. GEN 2.19
	B		
C	3.2 Km		
D	3.6 Km		

Veloc. Terrestre Kts	80	100	120	140	160
Angulo DES 3.4° FPM	481'	602'	722'	842'	963'
MAPt en RW30					

CAMBIO: Menor
 Change: Minor

DGAC AMDT 95

30 NOVIEMBRE 2023

DASA / SECCION AIS-MAP