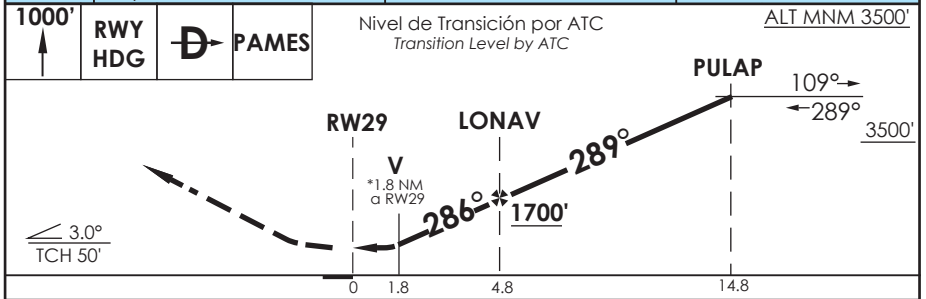
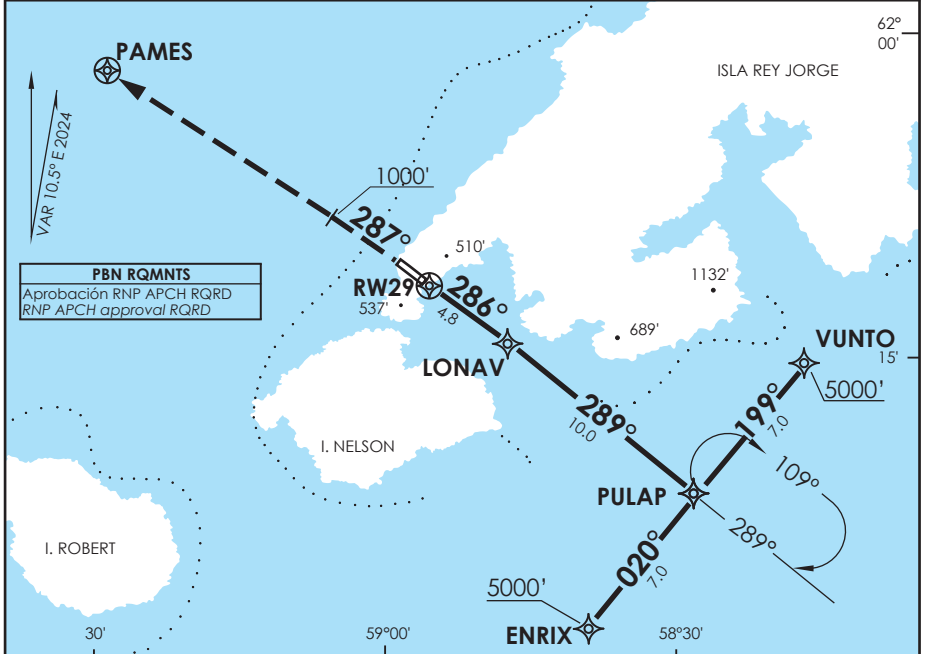


**ANTÁRTICA - CHILE**

**RNP Rwy 29 (LNAV Only)**

APP MARSH Marsh Approach	119.7	TORRE MARSH Marsh Tower	118.1	CONTROL TERRESTRE Ground Control	
<b>RNAV</b>	FINAL APCH CRS <b>286°</b>	MNM ALT LONAV <b>1700'</b>	MDA <b>760' (633')</b>	AD Elev. THR 29 Elev. <b>147'</b>	 MSA 25 NM RW29
APCH FRUSTRADA: Ascenso 1000' RWY HDG, luego directo PAMES, Ingrese HLDG 103 derecho o según autorización ATC. Missed Apch: Climb to 1000' on RWY HDG, then direct to PAMES, enter on HLDG 103 right or according to ATC clearance.					



C A T	DIRECTO RWY 29 <i>Straight in RWY 29</i>	CIRCULANDO SUROESTE <i>Circling Southwest</i>	CIRCULANDO NORESTE <i>Circling Northeast</i>
	<b>MDA 760' (633')</b>		
A	1.6 Km	760' (613)	840' (693)
B		860' (713)	860' (713)
C	2.8 Km	3.2 Km	920' (773)

Posibles témpanos en el área de aproximación, lecturas de Radioaltímetro pueden ser erráticas sobre hielo o nieve.  
 Possible icebergs in the approach area, readings from Radioaltimeter can be erratic over ice or snow.

Veloc. Terrestre Kts	80	100	120	140	160
Angulo DES 3.0° FPM	425'	531'	637'	743'	849'
MAPt en RW29					