

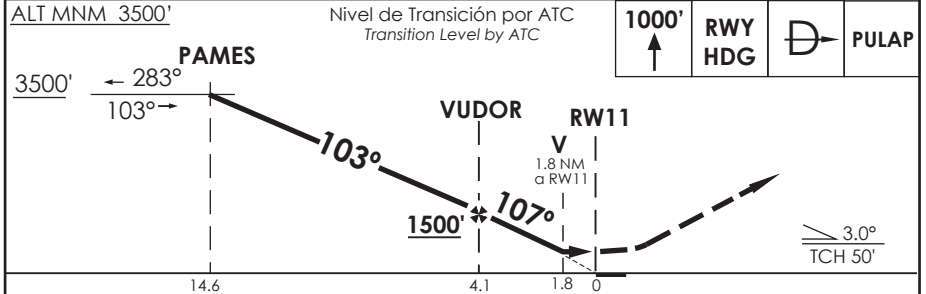
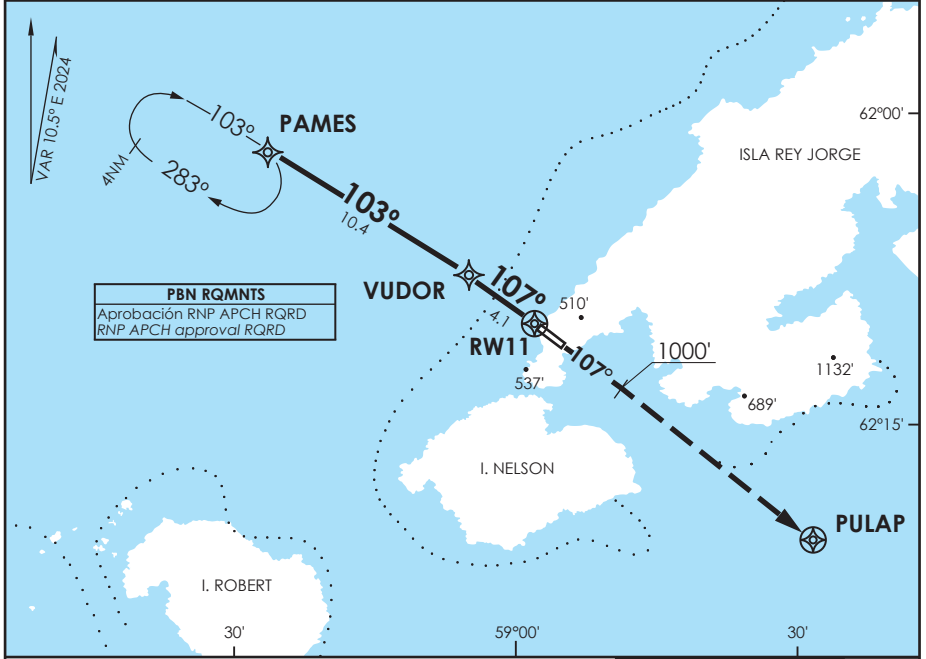
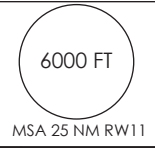
ANTARTICA - CHILE

RNP Rwy 11(LNAV Only)

APP MARSH Marsh Approach	119.7	TORRE MARSH Marsh Tower	118.1	CONTROL TERRESTRE Ground Control
RNAV	FINAL APCH CRS 107°	MNM ALT VUDOR	MDA(H) 760'(618')	AD Elev. 147' THR 11 Elev. 142'

APCH FRUSTRADA: Ascenso 1000' en RWY HDG, luego directo PULAP.
Ingreso HLDG 289 derecho o según autorización ATC.

Missed Apch: Climb to 1000' on RWY HDG, then direct to PULAP, enter on HLDG 289 right or according to ATC clearance.



CATEGORÍA	DIRECTO RWY 11 <i>Straight in RWY 11</i>		CIRCULANDO SUROESTE <i>Circling Southwest</i>	CIRCULANDO NORESTE <i>Circling Northeast</i>
	MDA 760' (618')			
	A	1.6 Km	760' (613')	840' (693')
	B		860' (713')	860' (713')
C	2.8 Km	(713')	920' (773')	

Posibles témpanos en el área de aproximación, lecturas de Radioaltímetro pueden ser erráticas sobre hielo o nieve.
Possible icebergs in the approach area, readings from Radioaltimeter can be erratic over ice or snow.

Veloc. Terrestre Kts	80	100	120	140	160
Angulo DES 3,0° FPM	425'	531'	637'	743'	849'
MAPt en RW11					

DASA / SECCION AFB-MAP