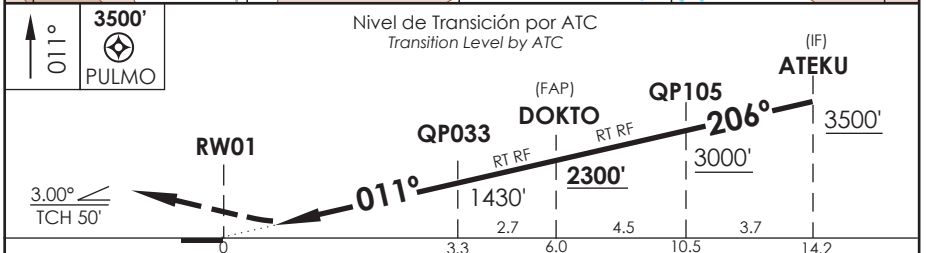
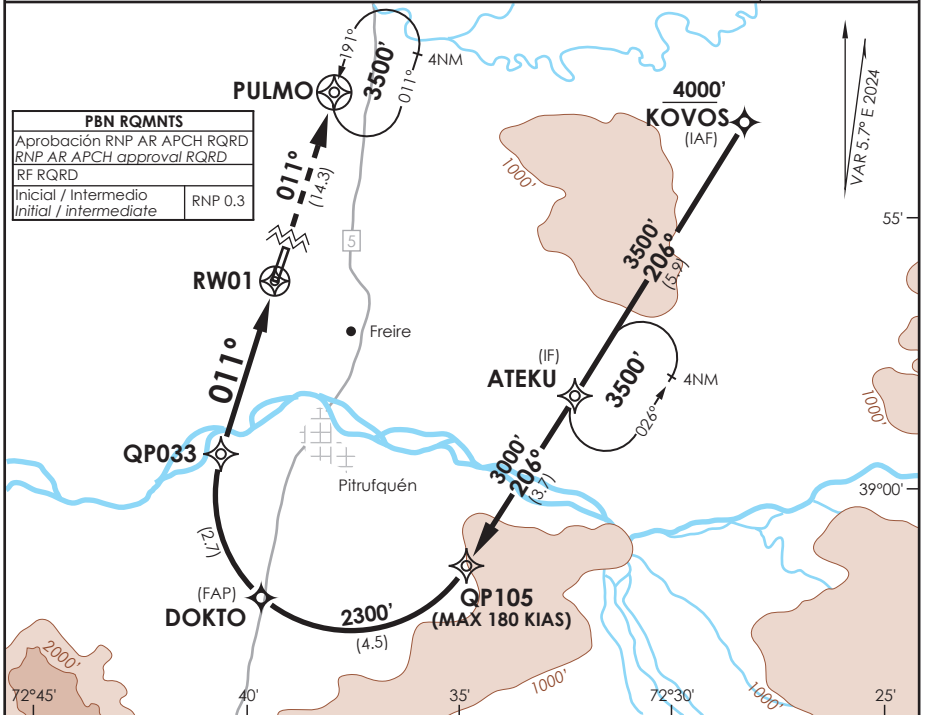


# AD. LA ARAUCANIA FREIRE - CHILE

SCQP IAC 9  
RNP Z Rwy 01 (AR)

TEMUCO RADAR Temuco Radar	119.2 /128.7	TORRE TEMUCO Temuco Tower	118.4	CONTROL TERRESTRE Ground Control	121.6
RNP	FINAL APCH CRS <b>011°</b>	MNM ALT DOKTO <b>2300'</b>	DA/H ver mínimos DA/H refer to minimums	AD Elev. 321' THR01 Elev. <b>321'</b>	5000 FT  MSA 25 NM RW01
APCH FRUSTRADA: Ascenso en TR011° directo a PULMO, 3500' e ingresar en HLDG. Missed Apch: Climb on TR011° direct to PULMO, 3500' and enter in HLDG.					



A B C D	DIRECTO RWY 01 Straight in RWY 01					RNP AR RWY 01 SCQP: Para sistemas Baro VNAV no compensados PROC NA BLW -5°C ó ABV 54°C.	
	RNP 0.15		RNP 0.30				
	DA 580' (259')		DA 660' (339')				
	CAT D:DA 590' (269')						
	ALSF-2	WO ALSF-2	ALSF-2	WO ALSF-2		MNM ALTN RNP 0.3: VER PAG GEN 2.19 See pag 2.19	
A	0.8 Km	1.6 Km	0.8 Km	1.6 Km			
B							
C							
D							
Veloc. Terrestre Kts		80	100	120	140	160	REQUIERE AUTORIZACIÓN ESPECIAL PARA ACFT Y CREW SPECIAL ACFT AND AIRCREW AUTHORIZATION REQUIRED
Angulo DES 3° FPM		425'	531'	637'	743'	849'	
MAPt en DA							

DASA / SECCION AIS-WAP