
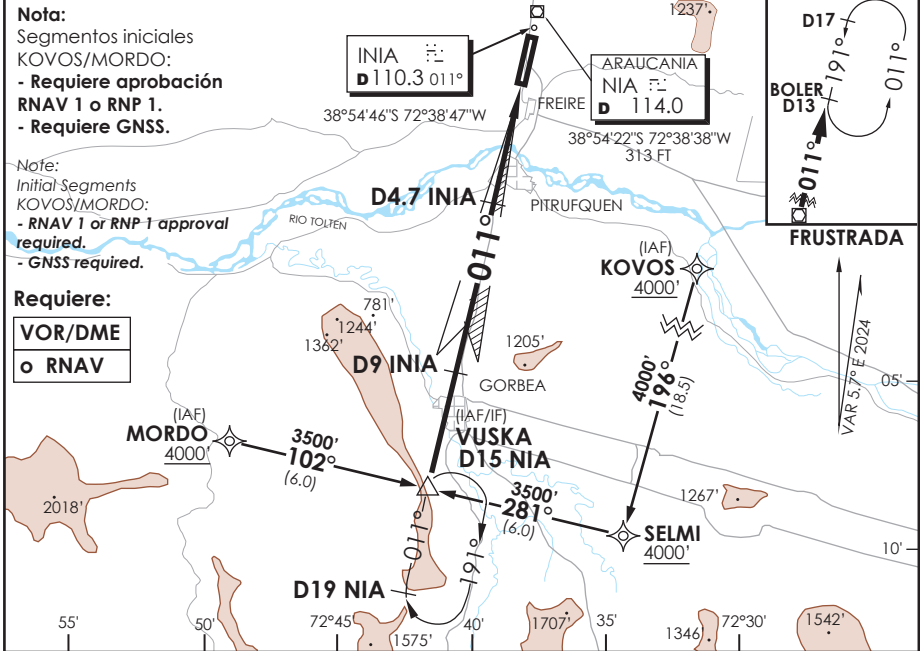


AD. LA ARAUCANIA FREIRE - CHILE

SCQP IAC 1
ILS Z Rwy 01

TEMUCO RADAR Temuco Radar	119.2/128.7	TORRE TEMUCO Temuco Tower	118.4	CONTROL TERRESTRE Ground Control	121.6
LOC INIA 110.3	FINAL APCH CRS 011°	MNM ALT D4.7 1800'	CAT II & IIA/B De acuerdo a CAT According to CAT	AD Elev 321' THR 01 Elev 321'	 MSA 25 NM NIA

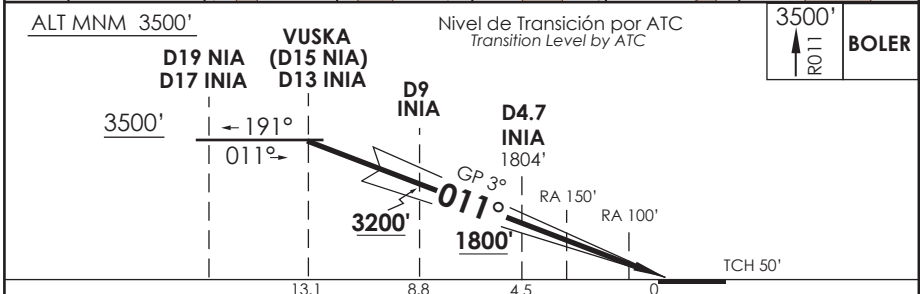
APCH FRUSTRADA: Ascenso a 3500' en R011 NIA directo BOLER D13 NIA, ingrese HLDG 191° izquierda o según autorización ATC.
 Missed Apch: Climb to 3500' on R011 NIA, direct to BOLER D13 NIA, enter HLDG 191° left or according to ATC clearance



Nota:
 Segmentos iniciales
 KOVOS/MORDO:
 - Requiere aprobación
 RNAV 1 o RNP 1.
 - Requiere GNSS.

Note:
 Initial Segments
 KOVOS/MORDO:
 - RNAV 1 or RNP 1 approval
 required.
 - GNSS required.

Requiere:
 VOR/DME
 o RNAV



ALT MNM 3500'		VUSKA (D15 NIA) D13 INIA		Nivel de Transición por ATC Transition Level by ATC		3500'	BOLER
D19 NIA		D9 INIA		D4.7 INIA 1804'			
3500'		3200'		1800'			
← 191°				GP 3°		RA 150'	
011°						RA 100'	
						TCH 50'	
13.1		8.8		4.5		0	
CATEGORIA	** DIRECTO RWY 01 <i>Straight in RWY 01</i>				Aeronaves operando "FAIL PASSIVE" DA(H) 371' (50 FT)		
	ILS CAT III-B *	ILS CAT III-A *	ILS CAT II		* Aircraft operating "FAIL PASSIVE" DA(H) 371' (50 FT)		
			RA 100' DA 421'(100')	RA 150' DA 471'(150')			
	A						
B	RVR 150m	RVR 200m	RVR 350m	RVR 500m			
C					MNM ALTN VER PAG GEN 2.19		
D					ALTN MNM See pag 2.19		

Se requiere certificación de ACFT y Habilitación de Tripulación Especial: DAN 06-02, 06-12
 Special Aircraft and aircrew certification required: DAN 06-02, 06-12

Veloc. Terrestre Kts	80	100	120	140	160	** WO INIA DME PROC NA
GP 3° FPM	425'	531'	637'	743'	849'	PROC not authorized without INIA DME

DASA / SECCION TAB-MAP