


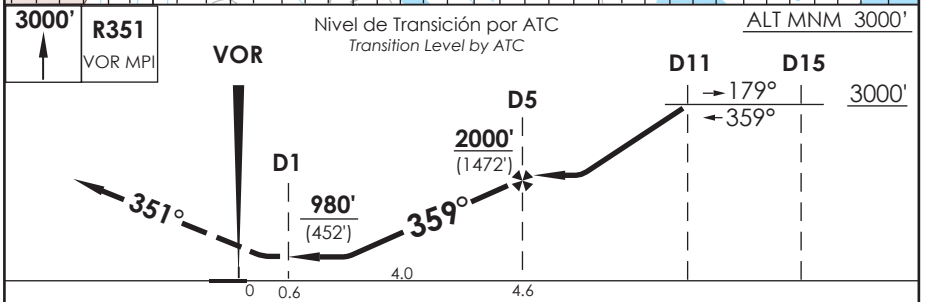
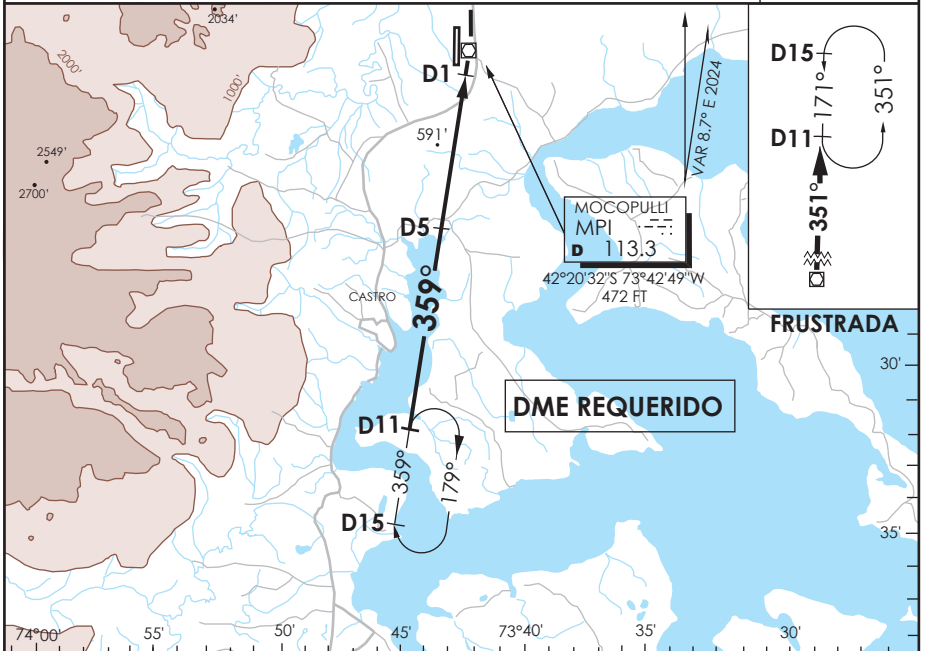
AD. MOCOPULLI DALCAHUE - CHILE

SCPQ IAC 2
VOR Rwy 35

APP PUERTO MONTI RADAR Puerto Montt Radar Approach 119.5 / 126.6		CHILOÉ Torre CHILOÉ Tower 118.4		CONTROL TERRESTRE Ground Control 121.6	
---	--	------------------------------------	--	---	--

VOR MPI 113.3	FINAL APCH CRS 359°	MNM ALT D5 2000' (1472')	MDA 980' (452')	AD Elev. 528' THR 35 Elev. 528'	 4100 FT MSA 25 NM MPI
-------------------------	-------------------------------	------------------------------------	---------------------------	--	---

APCH FRUSTRADA: Ascenso 3000FT R351 VOR MPI, ingrese HLDG BTN D11 y D15 N 171° izquierda o según autorización ATC.
 Missed Apch: climb to 3000FT on R351 MPI VOR, enter on HLDG BTN D11 and D15 N 171° left or according to ATC clearance.



CATEGORÍA	DIRECTO RWY 35 Straight in RWY 35		CIRCULANDO Circling	ALTN Alternate Minimums
	MDA 980' (452')			
	SSALF		980' (452')	1.6 Km
	WO SSALF			
A	1.2 Km	1.6 Km	VER PAG. GEN 2.19 SEE PAGE GEN 2.19	
B	2.0 Km	2.4 Km		
C				
D				

Veloc. Terrestre Kts	80	100	120	140	160
Angulo DES 3.0° FPM	425'	531'	637'	743'	849'
MIN:SEC (FAFTO MAPT 4.0)	3:00	2:24	2:00	1:43	1:30

DASA / SECCION AS-MAP