

AD. TTE. JULIO GALLARDO NATALES - CHILE

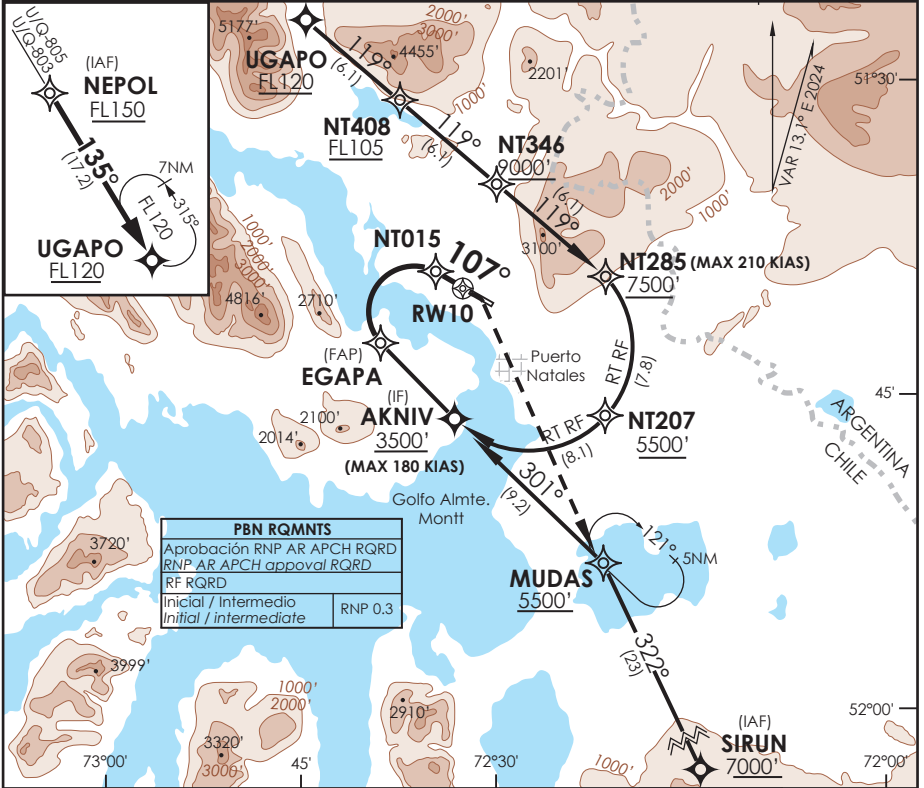
SCNT IAC 4 RNP RWY 10 (AR)

ACC PUNTA ARENAS Punta Arenas Center	123.9/128.1	TORRE NATALES Natales Tower	118.1	CONTROL TERRESTRE Ground control	121.7
---	-------------	--------------------------------	-------	-------------------------------------	-------

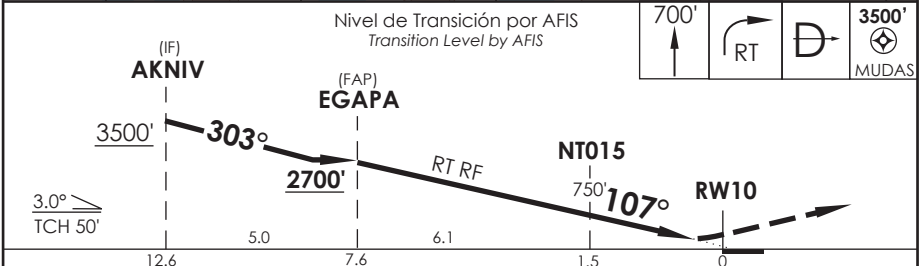
RNP	FINAL APCH CRS 107°	MNM ALT EGAPA 2700' (2491')	DA(H) 560' (351')	AD Elev. 218'	THR 10 Elev. 209'
-----	-------------------------------	---------------------------------------	-----------------------------	------------------	-----------------------------

APCH FRUSTRADA: ASC a 700 Ft, viraje derecha en ascenso para 3500' directo MUDAS, ingrese HLDG 301° derecha o según autorización ATC.
Missed Apch: Climb to 700 Ft, right turn climbing to 3500' direct to MUDAS, enter on HLDG 301° right or according to ATC clearance.

7600 FT
MSA 25 NM RWY10



PBN RQMNTS	
Aprobación RNP AR APCH RQRD	
RNP AR APCH approval RQRD	
RF RQRD	
Inicial / Intermedio Initial / intermediate	RNP 0.3



A B C	DIRECTO RWY 10 <i>Straight in RWY 10</i>	RNP AR RWY 10 SCNT: PROC NA BLW 0°C 6 ABV 54°C.
	RNP 0.2 DA 560' (351')	
	1.6 Km	MNM ALT NA

Veloc. Terrestre Kts	80	100	120	140	160	REQUIERE AUTORIZACIÓN ESPECIAL PARA ACFT Y TRIPULACIÓN SPECIAL AIRCRAFT AND AIRCREW AUTHORIZATION REQUIRED
Angulo DES 3.0° FPM	425'	531'	637'	743'	849'	
MAPt en DA						

CAMBIO: TR / FREQ TWR y GNDC / VAR
Change: TR / TWR and GNDC FREQ / VAR

DGAC AMDT 97

08 AGOSTO 2024

DASA / SECCION AS-MAP