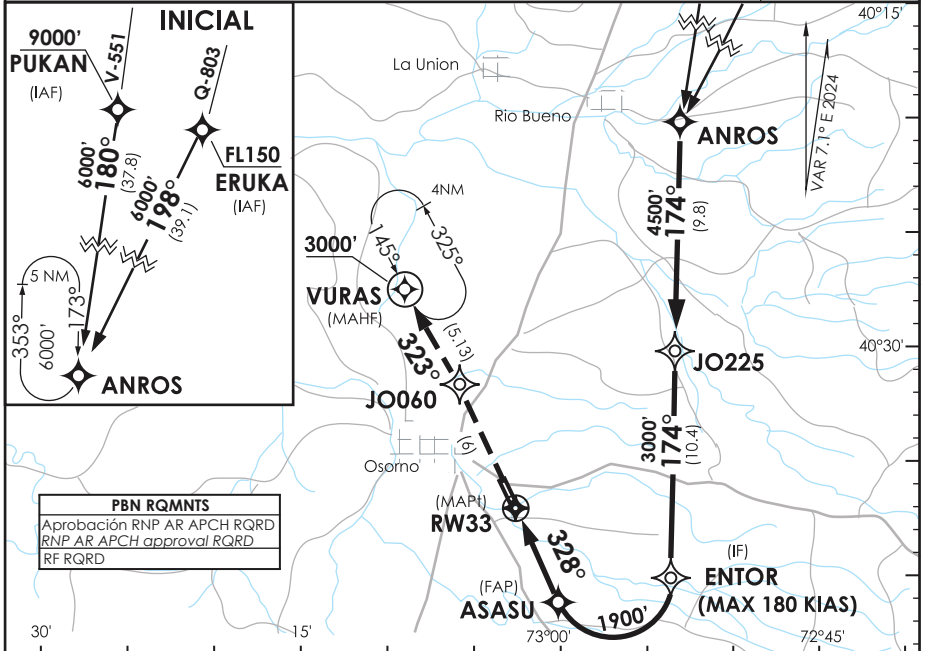


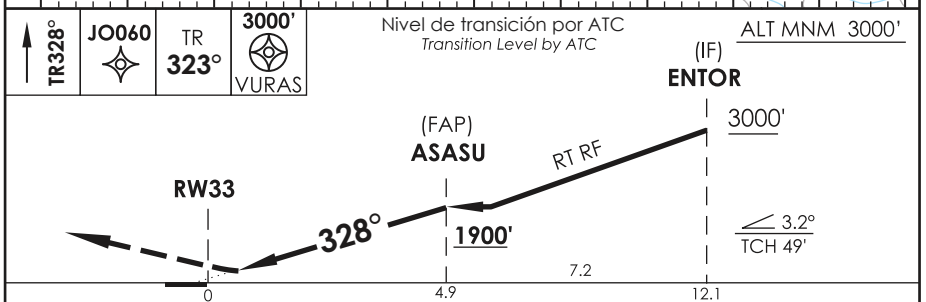
**OSORNO - CHILE**

**RNP Z Rwy 33 (AR)**

ACC PTO. MONTT Puerto Montt Center	119.5 / 126.6	TORRE OSORNO Osorno Tower	118.9	CONTROL TERRESTRE Ground Control	121.7
<b>RNP</b>	FINAL APCH CRS <b>328°</b>	MNM ALT ASASU <b>1900'</b>	DA/H ver mínimos DA/H refer to minimums	AD Elev. 187' THR 33 Elev. <b>181'</b>	5500 FT MSA 25 NM RW33
APCH FRUSTRADA: Ascenso en TR328° hacia JO060, continuar en TR322° hacia VURAS 3000', ingrese HLDG 144° izquierdo. Missed Apch: Climb on TR328° to JO060, continue climbing on TR322° to VURAS 3000', enter on HLDG 144° left.					



**PBN RQMNTS**  
Aprobación RNP AR APCH RQRD  
RNP AR APCH approval RQRD  
RF RQRD



CATEGORIA	DIRECTO RWY 33 Straight in RWY 33		RNP AR RWY 33 SCJO: Para sistemas Baro VNAV no compensados PROC NA BLW 0°C ó ABV 38°C.			
	RNP 0.15 DA <b>500'</b> (319')	RNP 0.30 DA <b>620'</b> (439')				
A	1.6 Km	1.6 Km	MNM ALTN RNP 0.3: VER PAG GEN 2.19 See pag 2.19			
B						
C				2.0 Km		
Veloc. Terrestre Kts	80	100	120	140	160	RQR AUTORIZACIÓN ESPECIAL PARA ACFT Y CREW SPECIAL ACFT AND AIRCREW AUTHORIZATION RQRD
Ángulo DES 3.2°	453'	566'	679'	793'	906'	
MAPt en DA						