

AP. MATAVERI ISLA DE PASCUA - CHILE

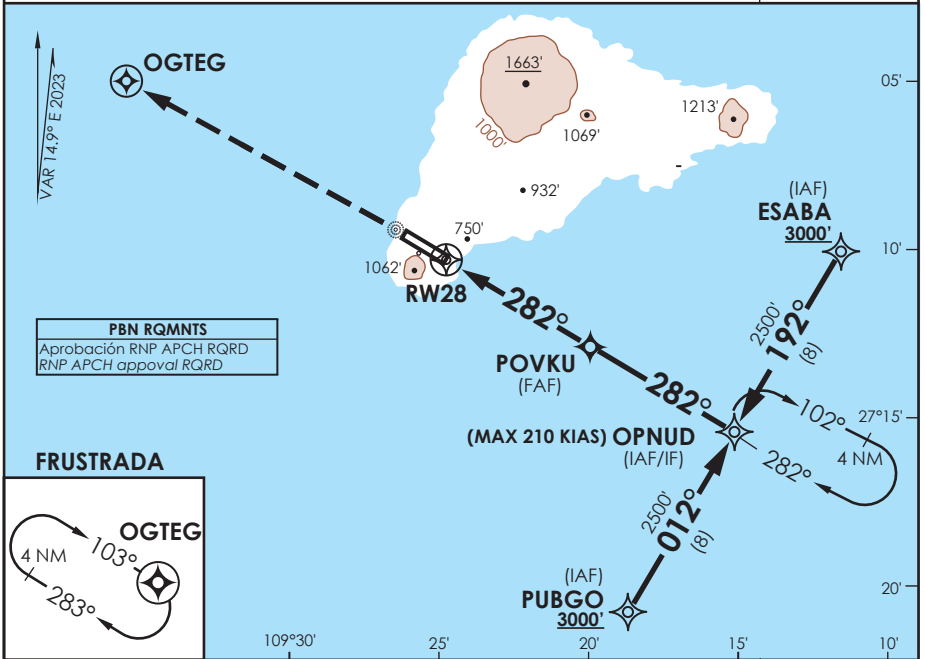
SCIP IAC 7 RNP Y Rwy 28

APP PASCUA Pascua Approach	127.3/118.1	TORRE PASCUA Pascua Tower	118.1	CONTROL TERRESTRE Ground Control	121.9
-------------------------------	-------------	------------------------------	-------	-------------------------------------	-------

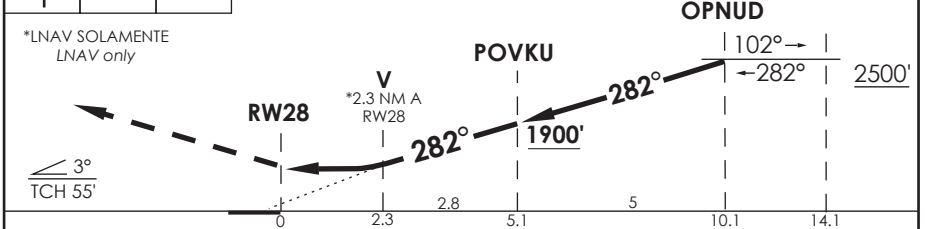
RNP	FINAL APCH CRS 282°	MNM ALT POVKU 1900'	LNAV/VNAV DA 890' (663')	AD Elev. THR 28 Elev.	227' 227'
------------	-------------------------------	-------------------------------	------------------------------------	--------------------------	----------------------------



APCH FRUSTRADA: ASC en RWY HDG a 1500', luego directo a OGTEG en ascenso para 2500' e ingrese a HLDG 103° derecha o según autorización ATC.
Missed Apch: Climb on RWY HDG to 1500', then direct to OGTEG climbing to 2500' and enter HLDG 103° right or according to ATC clearance.



1500'	2500'	Nivel de Transición por ATC Transition Level by ATC	ALT MNM 3000'
-------	-------	--	---------------



C A B C D	DIRECTO RWY 28 <i>Straight in RWY 28</i>		CIRCULANDO <i>Circling</i>	ALTN <i>Alternate Minimums</i>
	LNAV/VNAV DA 890' (663')	LNAV MDA 1020' (793')		
A	1.6 Km	1.6 Km	N A	VER PAG. GEN 2.19
B		2.0 Km		
C	3.2 Km	3.6 Km		
D				

PROC BARO-VNAV NA BLW 0°C ó ABV 54°C					
Veloc. Terrestre Kts	80	100	120	140	160
Angulo DES 3° FPM	425'	531'	637'	743'	849'
MAPT en RW28					

DASA / SECCION AIS-MAP