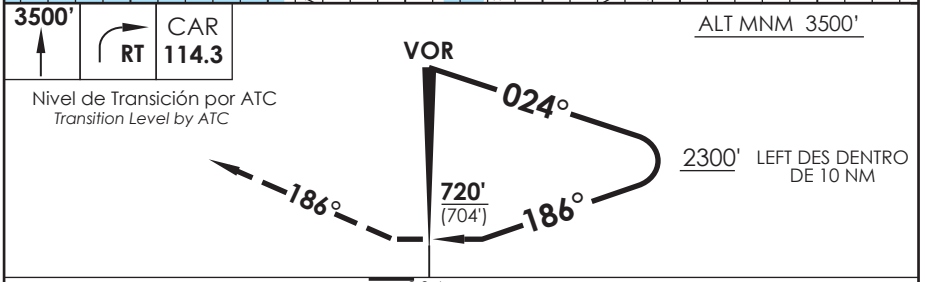


AD. CARRIEL SUR (INTL O/R) CONCEPCION - CHILE

SCIE IAC 8
VOR Y RWY 20

CONCEPCION RADAR Concepción RADAR		125.8/129.35	TORRE CONCEPCION Concepción Tower		118.6	CONTROL TERRESTRE Ground Control		121.9
VOR CAR 114.3	FINAL APCH CRS 186°	WO FAF		MDA (H) 720' (704')	AD Elev. THR 20 Elev.	26' 16'		 4300 FT MSA 25 NM CAR
APCH FRUSTRADA: Ascenso 3500' HDG 186°, viraje derecha directo CAR VOR, ingrese a HLDG 024° izquierdo. Missed Apch: Climb to 3500' on HDG 186°, right turn direct to CAR VOR, enter on HLDG 024° left.								



CATEGORIA	DIRECTO RWY 20 <i>Straight in RWY 20</i> *		CIRCULANDO OESTE Circling West		ALTN Alternate Minimums
	MDA 720' (704')				
A	1.6 Km		720' (694')	1.6 Km	VER PAG. GEN 2.19
B				3.2 Km	
C	3.2 Km			3.6 Km	
D	3.6 Km				
* Desalineado 14° respecto a RCL / Offset 14° from RWY center line					